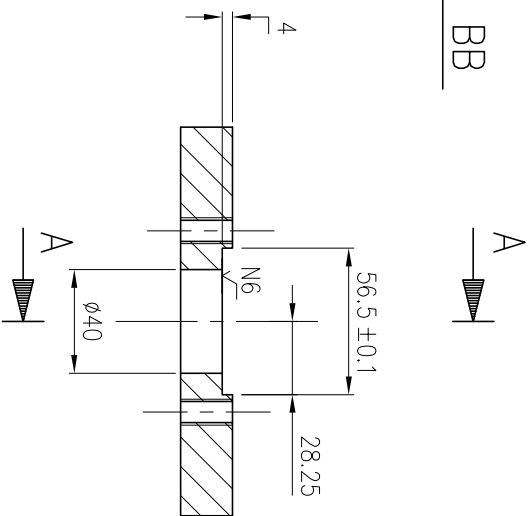
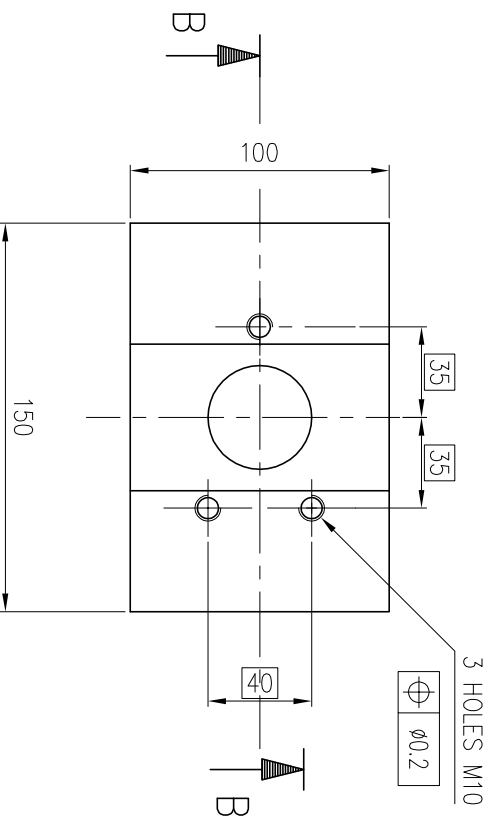
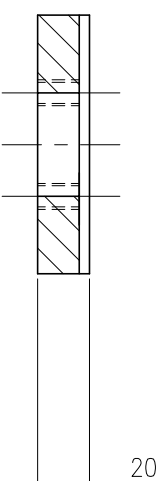


SECTION BB




SECTION AA



NOTES:

- 1-TREATMENT : SEE SPEC. ESRF/ENG/92-02
2-REMOVE ALL BURRS AND SHARP EDGES.

- 2-REMOVE ALL BURRS AND SHARP EDGES.

			E24 - 2	
ITEM	DRAWING N.	QTY	DESCRIPTION /	REMARKS
			MATERIAL	W./Kg
0mm SCALE: 1:2 <div style="border-bottom: 1px solid black; width: 100%; height: 10px;"></div> 200			NAME	DATE
BEAMLINE GENERAL MEC. SUPPORT & ALIGNMENT SOLE			DRN.	D.COULON 26.07.95
			CKD.	
			APPD.	
			ISO STANDARD	
			GEN. SURFACE FINISH : N 8	
			GEN. LINEAR TOL. : Js13	
			GEN. ANGULAR TOL. : ± 0.5°	
			EUROPEAN SYNCHROTRON RADIATION FACILITY BP 220 38043 GRENOBLE CEDEX-FRANCE TEL. 76-88-20-00 FAX 76-88-20-20	
A 3	00.61.1685			A

BEAMLINE GENERAL
MEC. SUPPORT & ALIGNMENT
SOLE

MEC. SUPPORT & ALIGNMENT

SOLE

EUROPEAN SYNCHROTRON

RADIATION FACILITY

BP 220 38043 GRENOBLE CEDEX-FRANCE
TEL. 76-88-20-00 FAX 76-88-20-20

TEL. 76-88-20-00 FAX 76-88-20-20

ISO STANDARD

GEN. SURFACE FINISH : N 8

GEN. LINEAR TOL. : Js13

GEN. ANGULAR TOL. : $\pm 0.5^\circ$

ASSY.	00.61.1684
-------	------------

00.61.1685

ESRF

ERROR: syntaxerror
OFFENDING COMMAND: --nostringval--

STACK:

/Title
()
/Subject
(D:20100609084515+02'00')
/ModDate
()
/Keywords
(PDFCreator Version 0.9.5)
/Creator
(D:20100609084515+02'00')
/CreationDate
(ribois)
/Author
-mark-