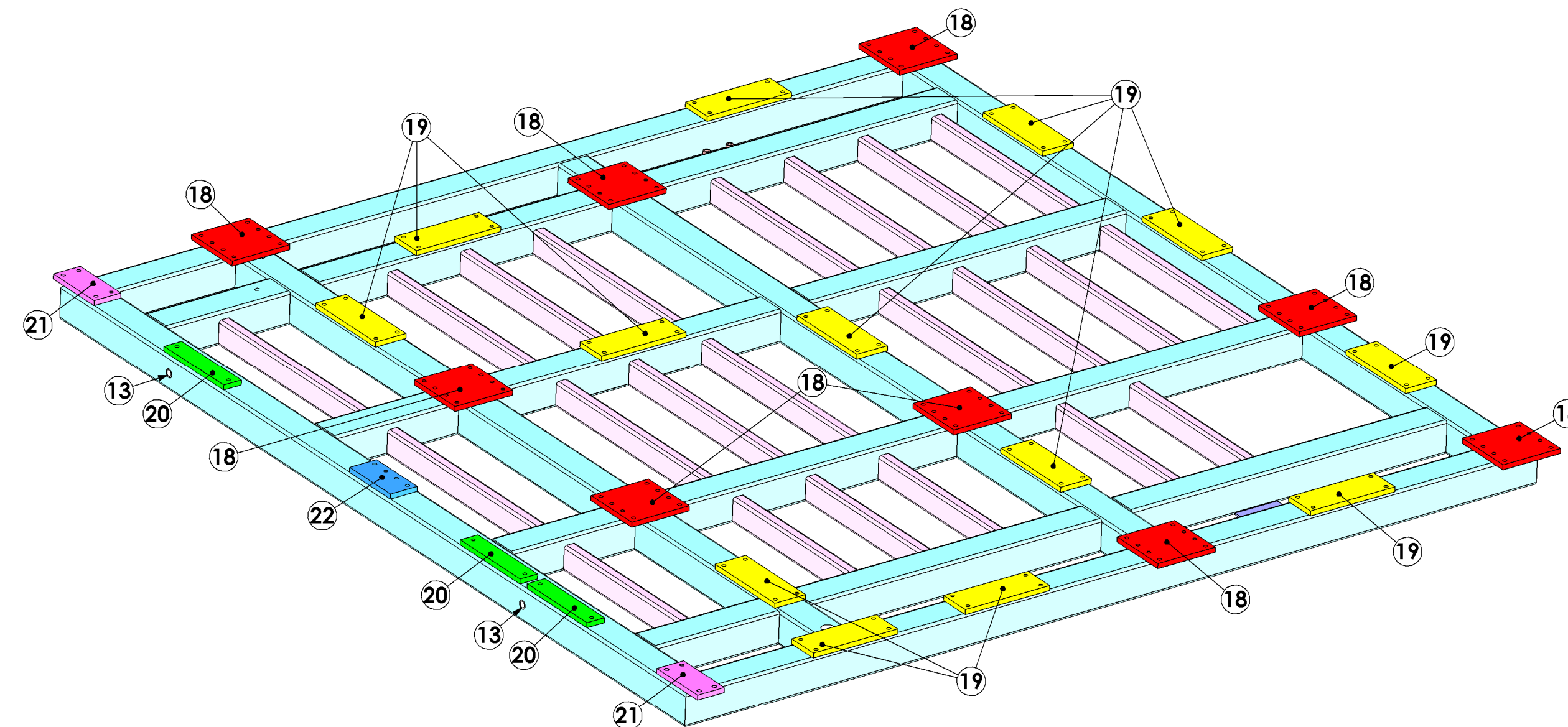
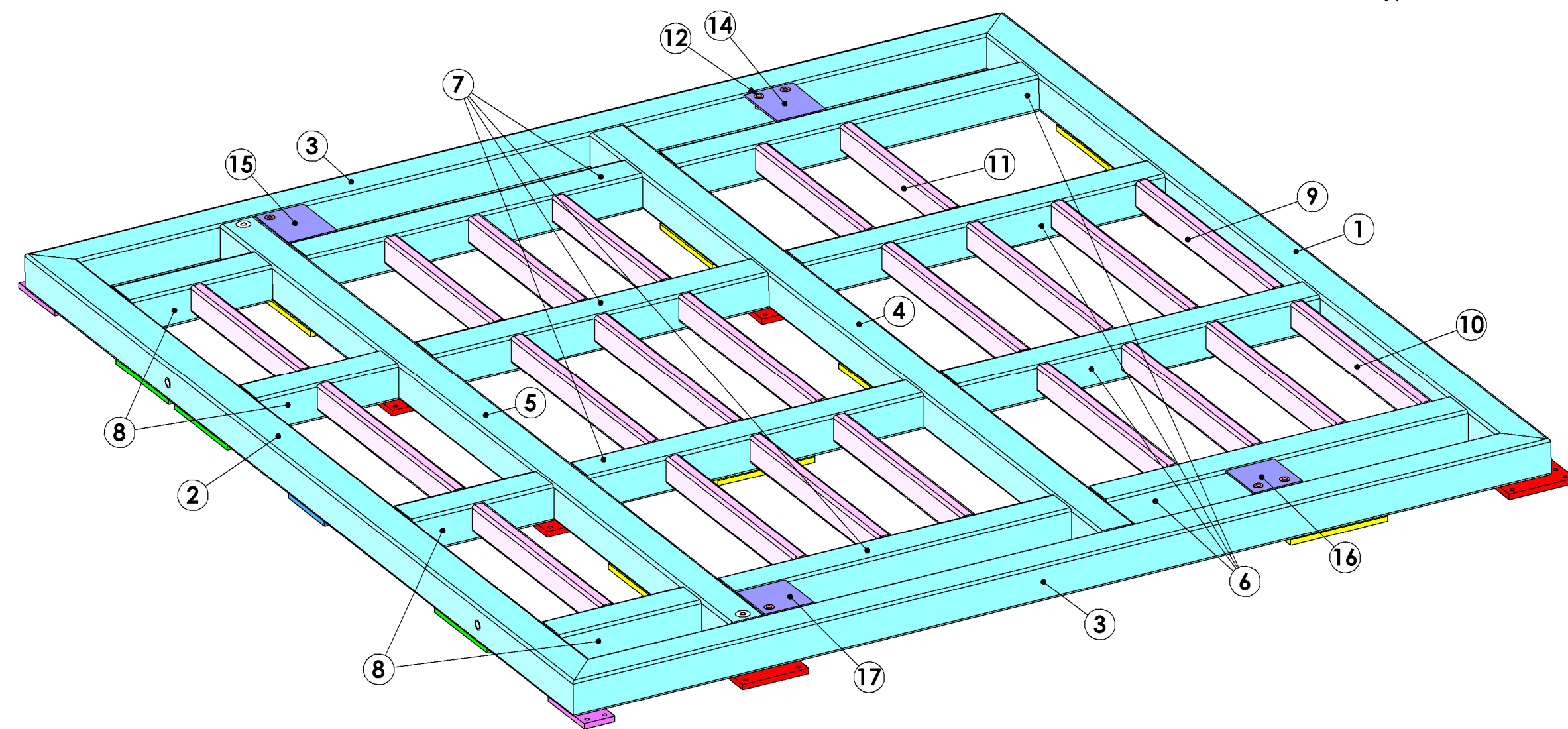
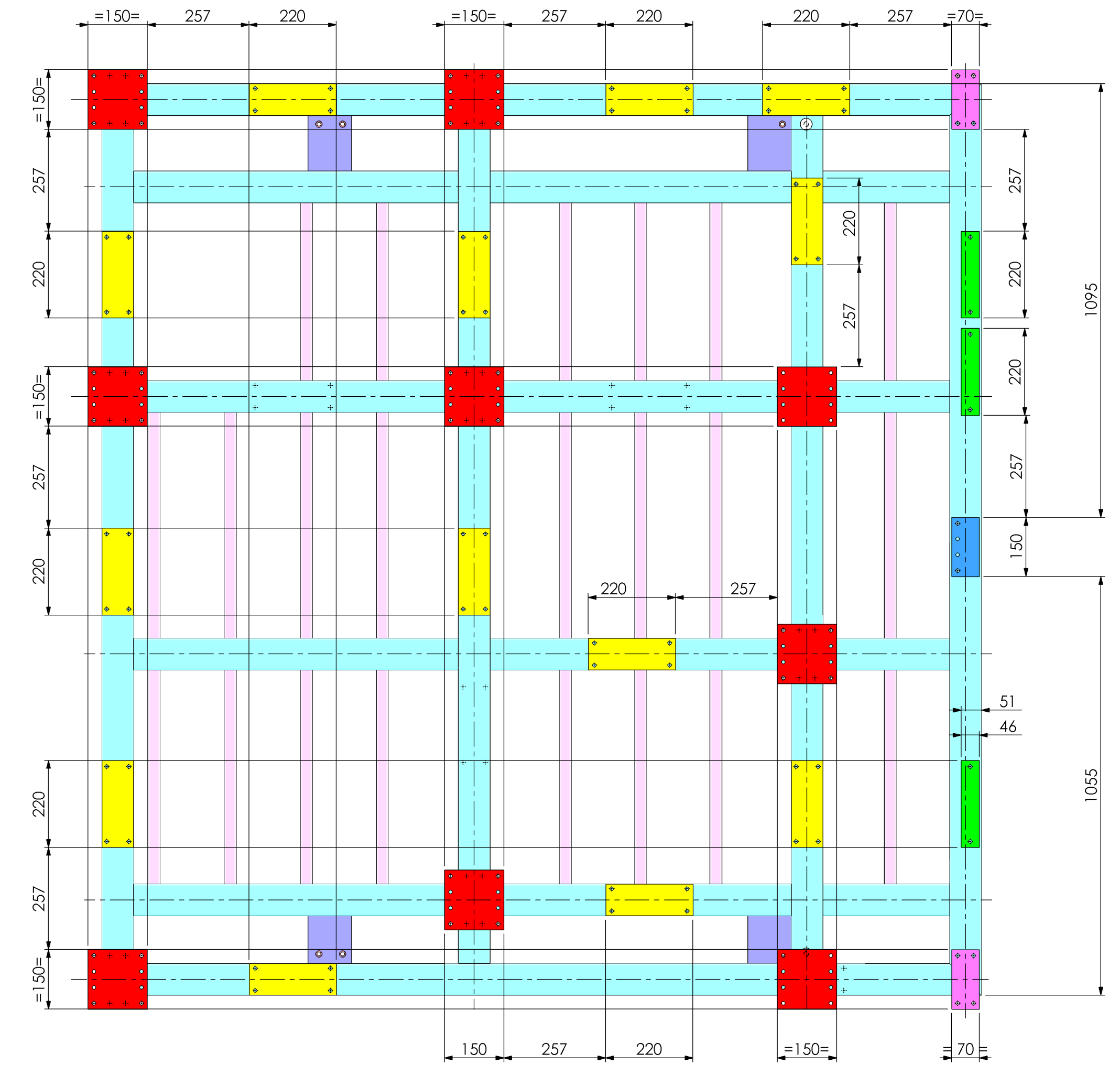
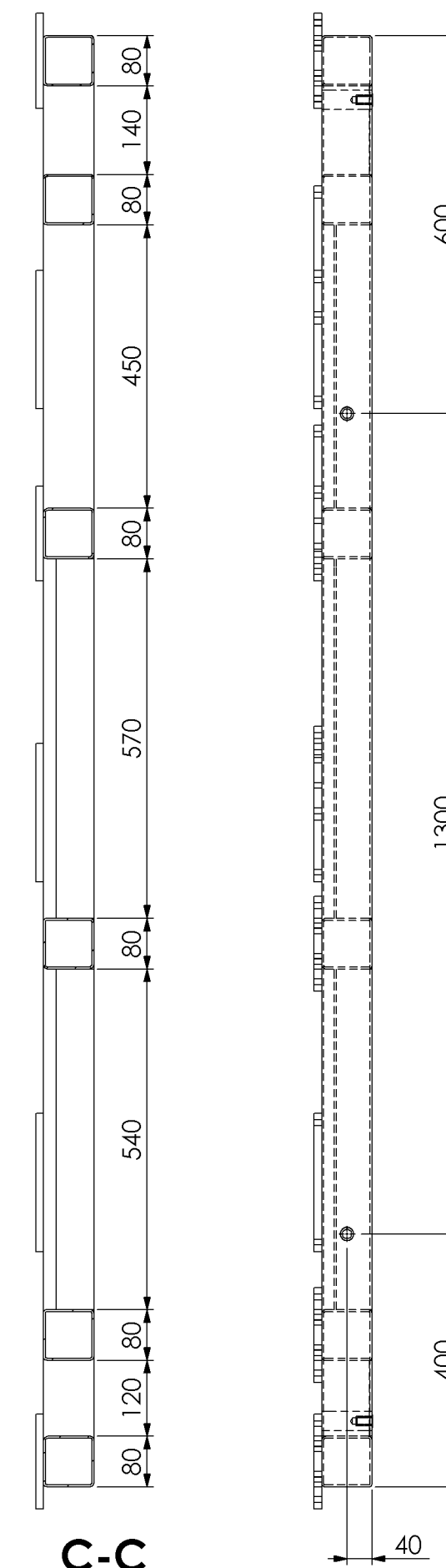
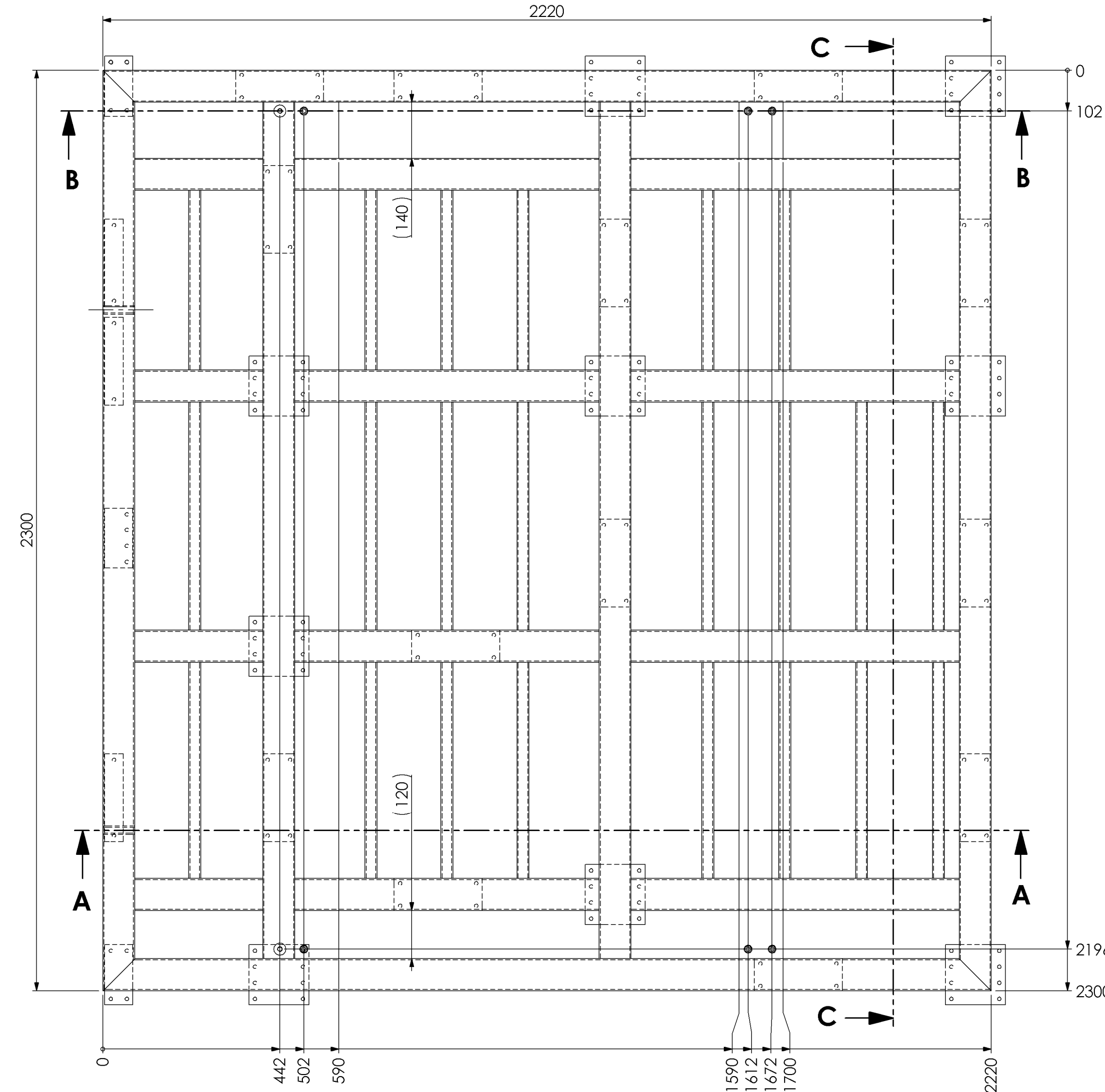
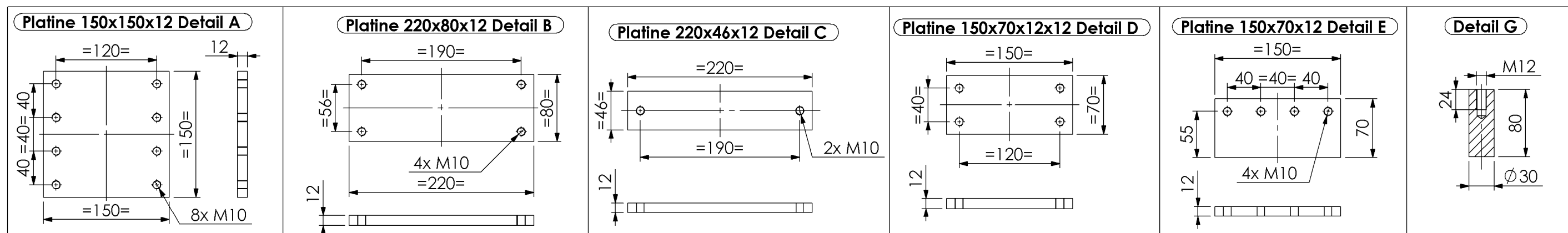


A-A

B-B



DETAIL ECH:1/5



No.	QTE	DESCRIPTION	LONG.
1	1	tube carré 80x80x3	2300
2	1	tube carré 80x80x3	2300
3	2	tube carré 80x80x3	2220
4	1	tube carré 80x80x3	2140
5	1	tube carré 80x80x3	2140
6	4	tube carré 80x80x3	820
7	4	tube carré 80x80x3	760
8	4	tube carré 80x80x3	320
9	8	Tube rectangulaire 60x30x3	570
10	8	Tube rectangulaire 60x30x3	540
11	6	Tube rectangulaire 60x30x3	450
12	6	Rivkle M12 No. art.: 23291124501/40 Boellhoff	
13	2	Tube 15x21 Lg:80	
14	1	Platine 140x110x4	
15	1	Platine 140x110x4	
16	1	Platine 120x110x4	
17	1	Platine 120x110x4	
18	9	Platine 150x150x12 Detail A	
19	13	Platine 220x80x12 Detail B	
20	3	Platine 220x46x12 Detail C	
21	2	Platine 150x70x12x12 Detail D	
22	1	Platine 150x70x12 Detail E	
23	2	Douille M12 D:30 L:80 Detail G	

Incl. F		Matière : E24-2
Incl. E		Traitement : -
Incl. D		Rol. géné.: 3.2
Incl. C		Tol. géomé. : +/- 0.1mm
Incl. B		
Projet : CHASSIS CANON ADB		
Désignation : CADRE ENSEMBLE		
Heyman		
5 place de gordes 38000 Grenoble Tel : 06 33 81 88 11 e-mail heyman@design-mecanique.fr		
		Nom de l'acier : PIC-CAD38-02-FOUJ-Soc NF de plan : PIC-CAD38-02
		Echelle: 1/10 Format: A1 Feuille: 3 / 6 date de cotation: 14/07/2024
		Indices

SOUDESURES : A=3 CONTINUE ETANCHE
TOLERANCE GENERALE : ± 1 mm
TOLERANCE DE PLANEITE : ± 1 mm/m
PEINTURE EPOXY EP: 60 μ
COULEUR : BLANC RAL 9010
Masse : 236.35 Kg

FOLIO 5/6
COTATION PERCAGES KIT SISMIQUE SUR LE FOLIO 6