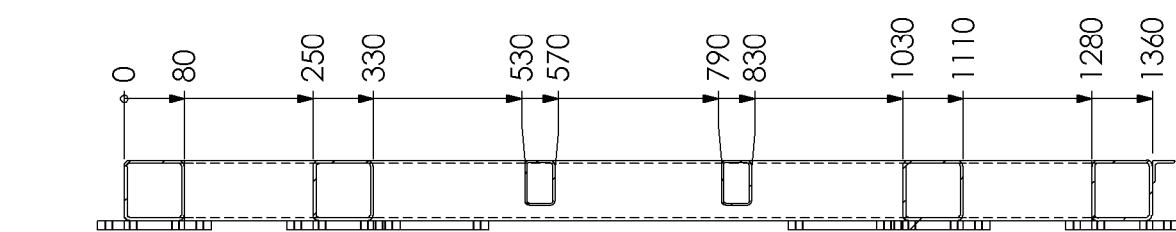
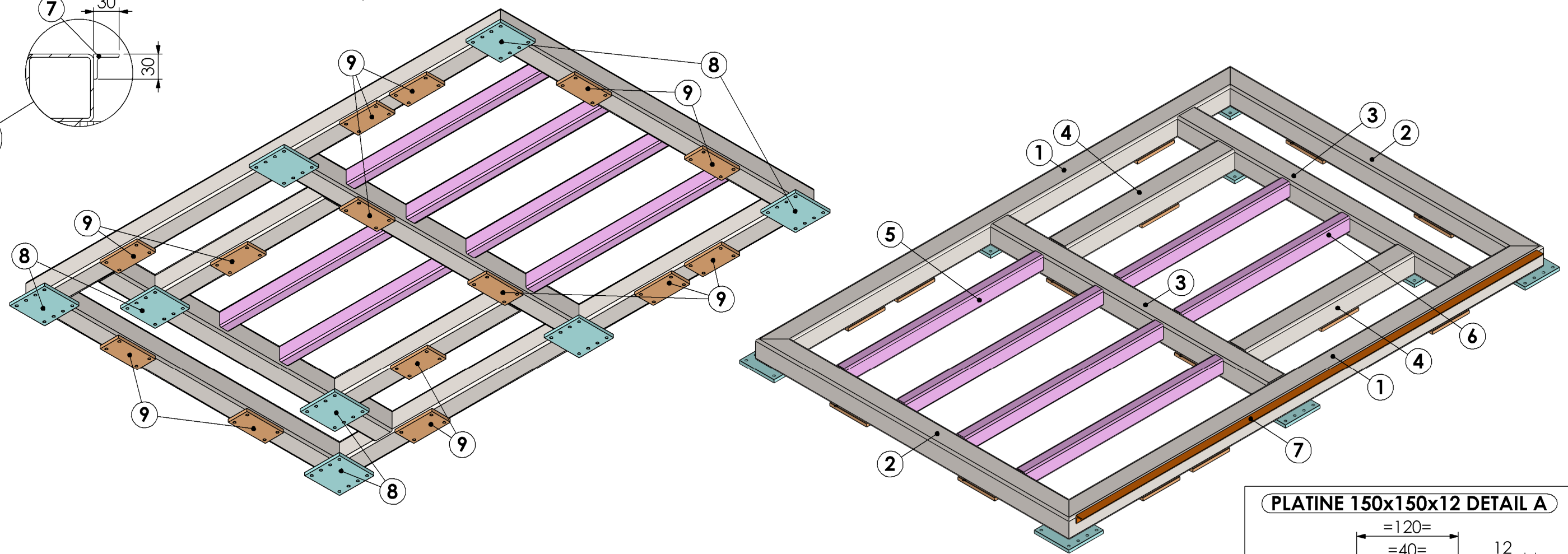


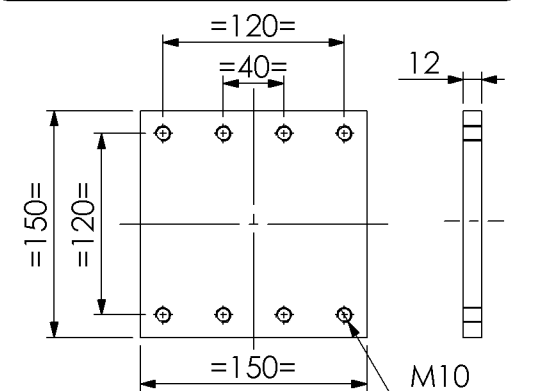
C-C



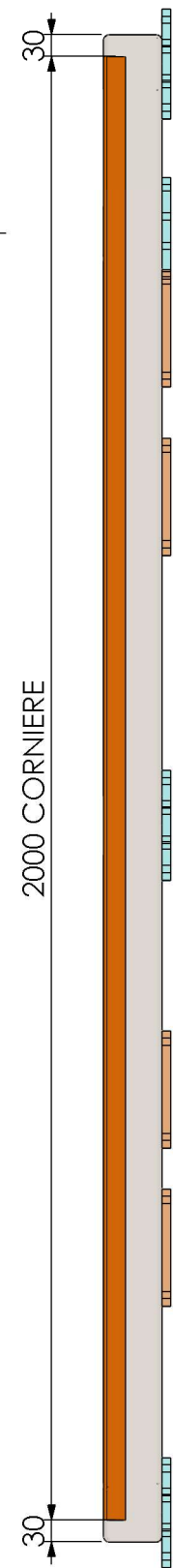
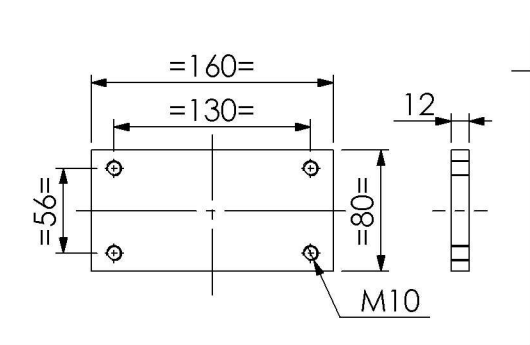
B-B



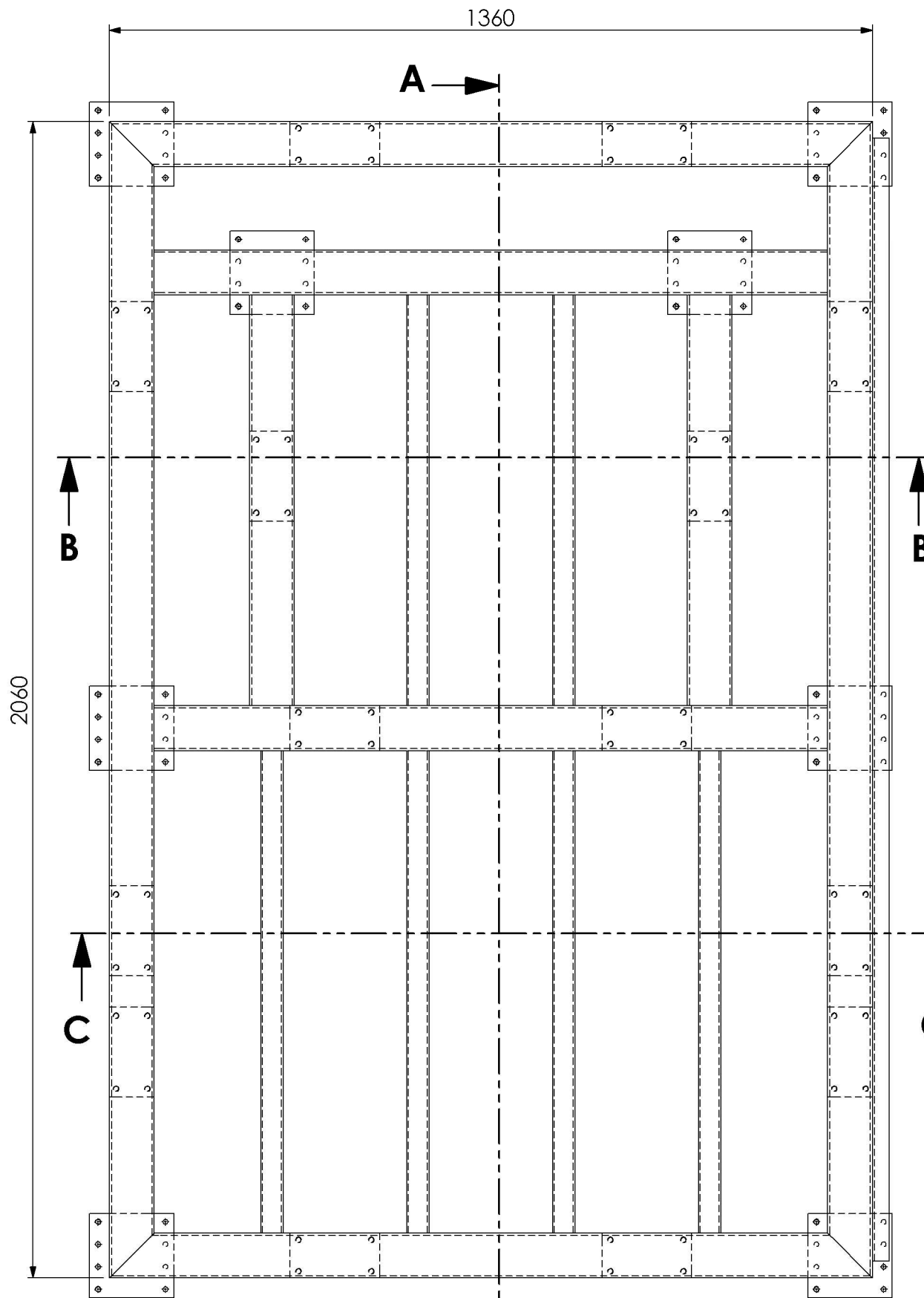
PLATINE 150x150x12 DETAIL A



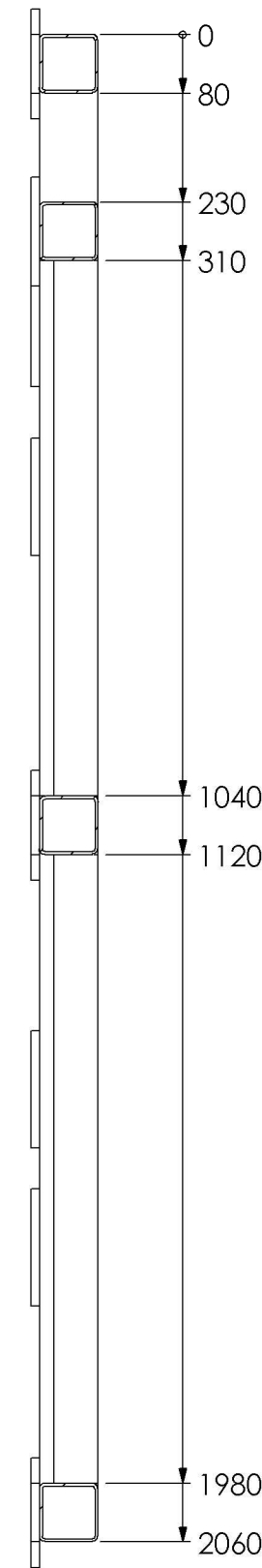
PLATINE 160x80x12 DETAIL B



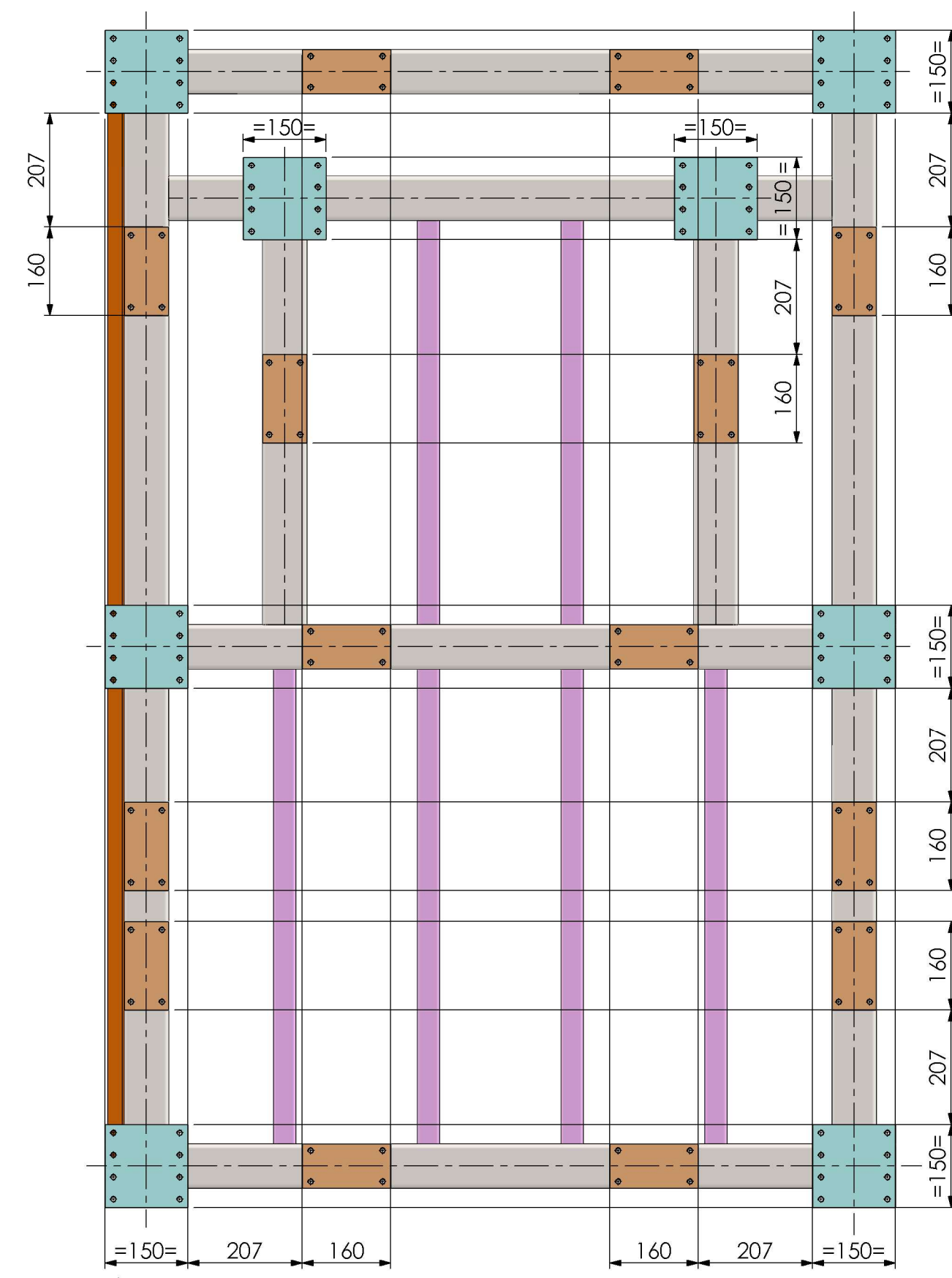
2000 CORNIERE



A-A



A-A



No.	QTE	DESCRIPTION	LONG.
1	2	tube carré 80x80x4	2060
2	2	tube carré 80x80x4	1360
3	2	tube carré 80x80x4	1200
4	2	tube carré 80x80x4	730
5	4	Tube rectangulaire °60X40X3	860
6	2	Tube rectangulaire °60X40X3	730
7	1	Cornière ailes égales 30X30X4	2000
8	8	PLATINE 150x150x12 DETAIL A	
9	14	PLATINE 160x80x12 DETAIL B	

SOUDURES : A=3 CONTINUE ETANCHE
TOLERANCE GENERALE : ± 1 mm
TOLERANCE DE PLANEITE : ± 1 mm/m
PEINTURE EPOXY EP: 60µ
COULEUR : BLANC RAL 9010
Masse: 152 Kg

Ind. F		
Ind. E		
Ind. D		
Ind. C		
Ind. B		
Projet : CHASSIS MEB101		
Désignation : CADRE		
Masse : 152.31 Kg		
Matière : E24-2		
Traitement :		
Rug. géné.: 3.2		
Tol. géné.: +/- 0.1mm		
Heyman		
5 place de Gordes 38000 Grenoble		
Tel : 06 33 31 88 11 e-mail : heyman@design-mecanique.fr		
Norme de fichier: PIC-MEB-02		
N° de plan: PIC-MEB-02		
Indice		