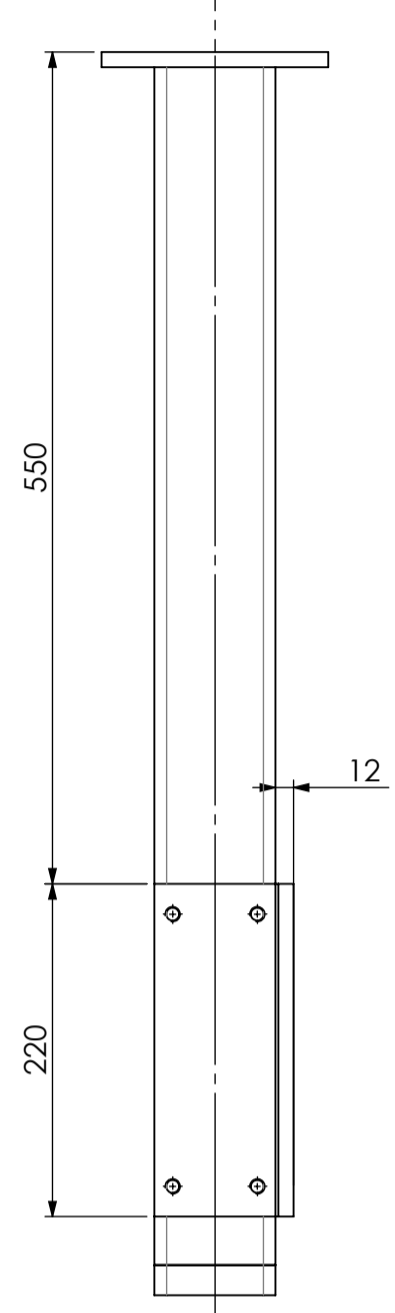
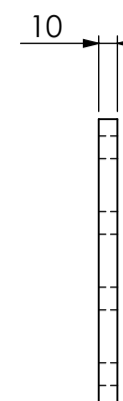


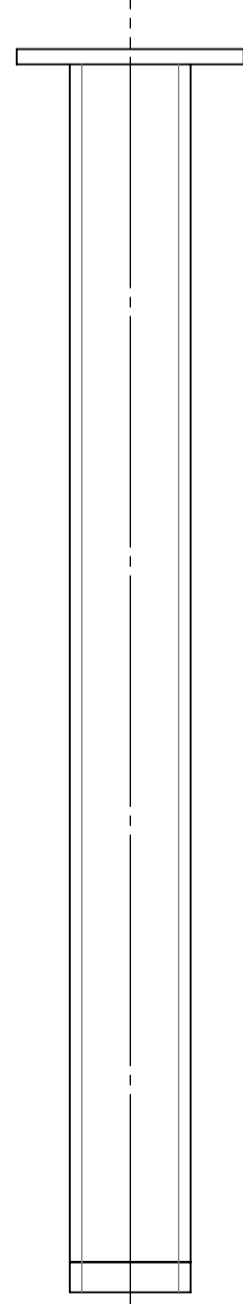
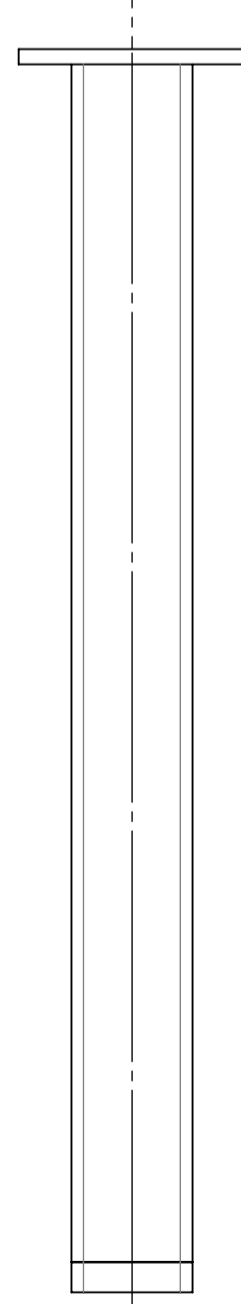
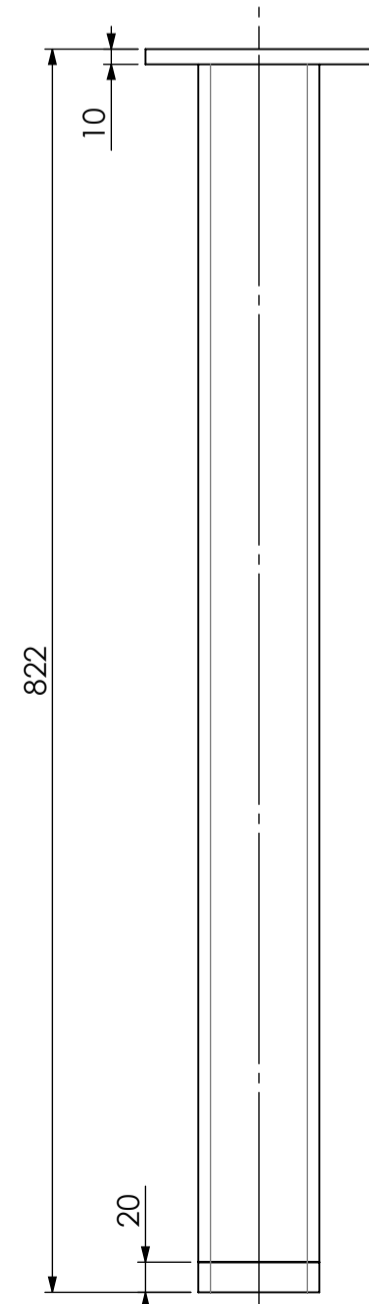
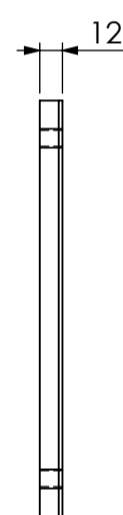
Technical drawing of a vertical component. The drawing shows a central vertical shaft with a flange at the top and a base. Dimensions are indicated: 822 (total height), 10 (flange thickness), 792 (height to the base of the internal feature), 20 (base thickness), and 12 (width of the internal feature).



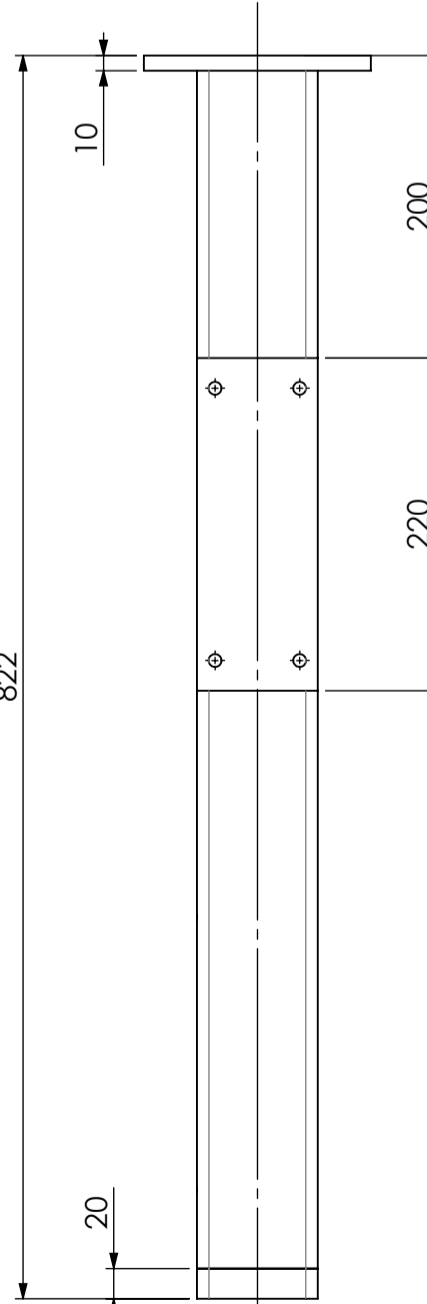
Technical drawing of a vertical rectangular object. The overall height is 822. The top section has a height of 10. The bottom section has a height of 20. The width of the object is 12. The drawing shows a central vertical line and a dashed line on the right side.



Technical drawing of a rectangular plate. The front view shows a rectangle with a width of 80 and a height of 180. There are four circular holes, one in each quadrant, with a diameter of 56. The side view shows a thickness of 12. The bottom view shows a 45° chamfer on the left and a 2 x 45° chamfer on the right.



Technical drawing of a vertical rectangular object. The drawing shows a side view with a horizontal top edge and a vertical centerline. A dimension line on the left indicates a width of 12. A dimension line on the right indicates a height of 792.



Ind. F		
Ind. E		
Ind. D		
Ind. C		
Ind. B		

Matière : E24-2
Traitement : -
Rug. gén.: 3.2
Tol. gén.: +/- 0.1mm

	Echelle:1:5	Format:A1	Feuille 1 / 1
	date de création : 19/01/2025		
Nom de fichier :FAU-MALTAIR02-05 PIEDS			Indice
N° de plan FAU- MALTAIR02 -05			

date de creation : 19/01/2025	
Nom de fichier : FAU-MALTAIR02-05 PIEDS	Indice
N° de plan FAU- MALTAIR02 -05	