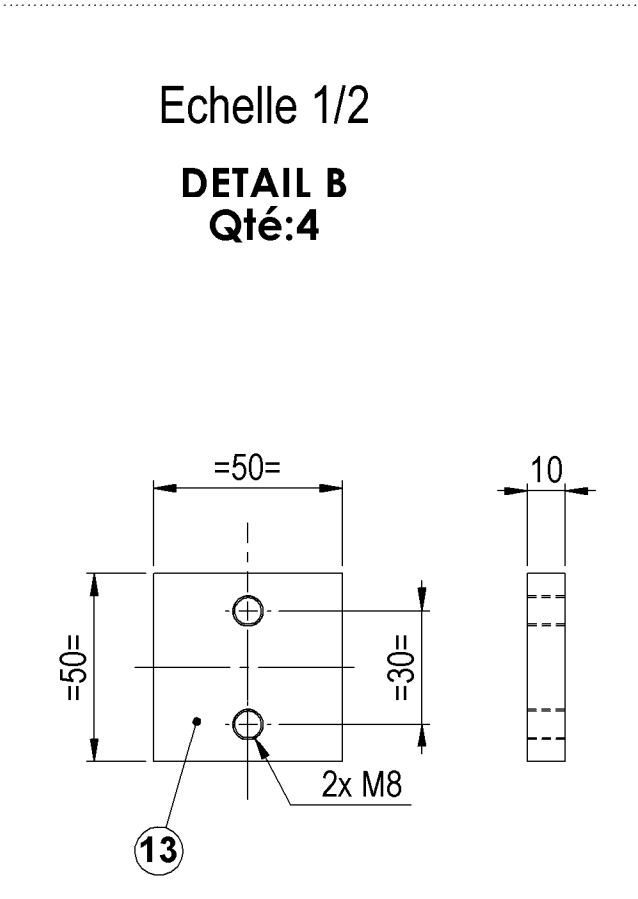
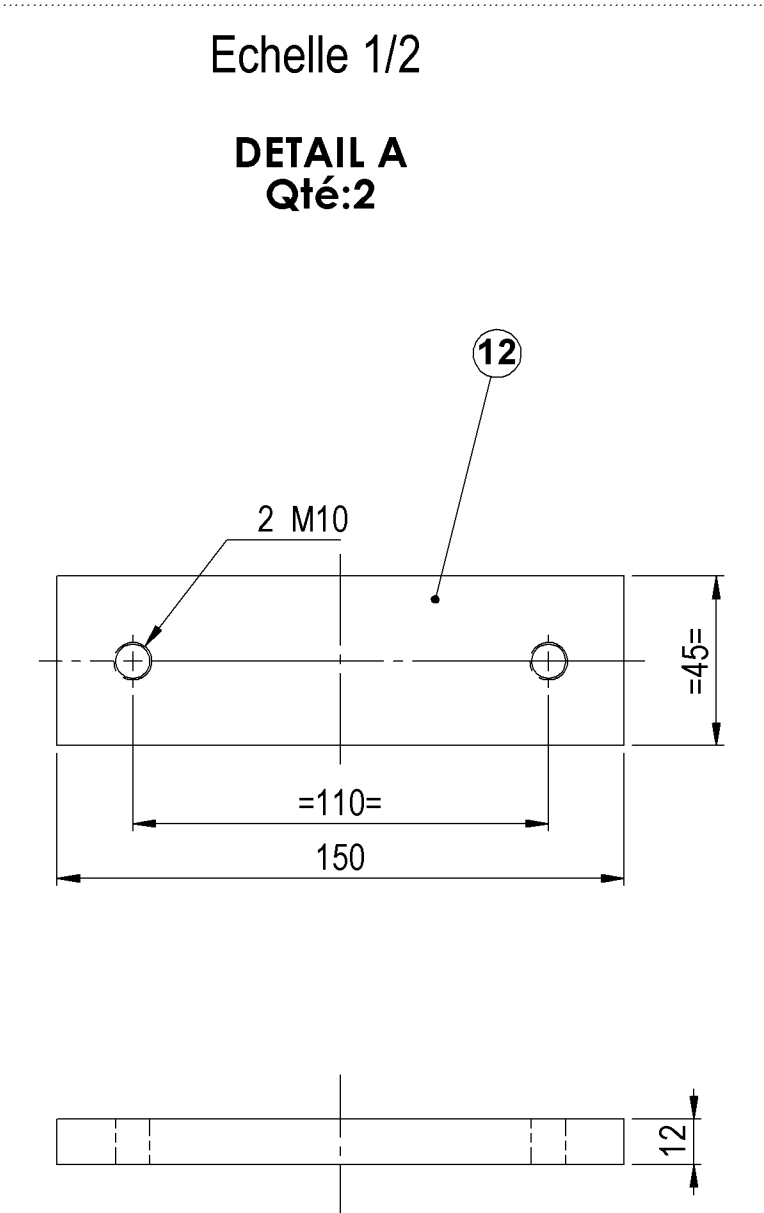
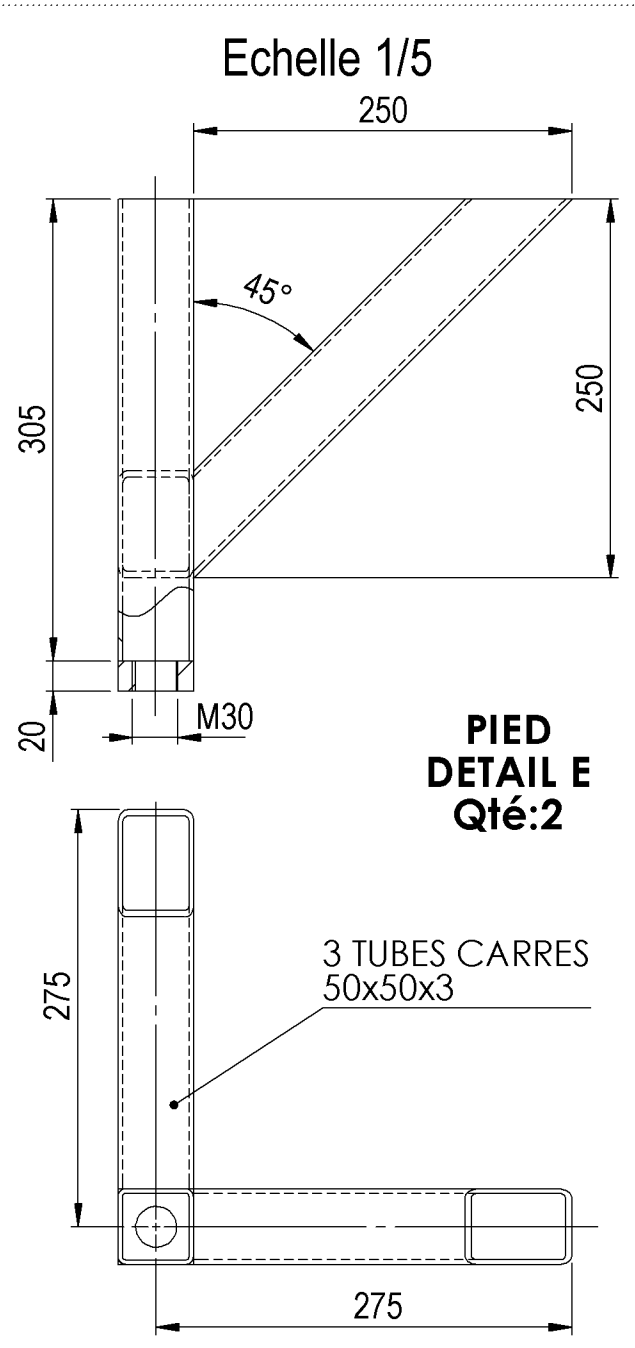
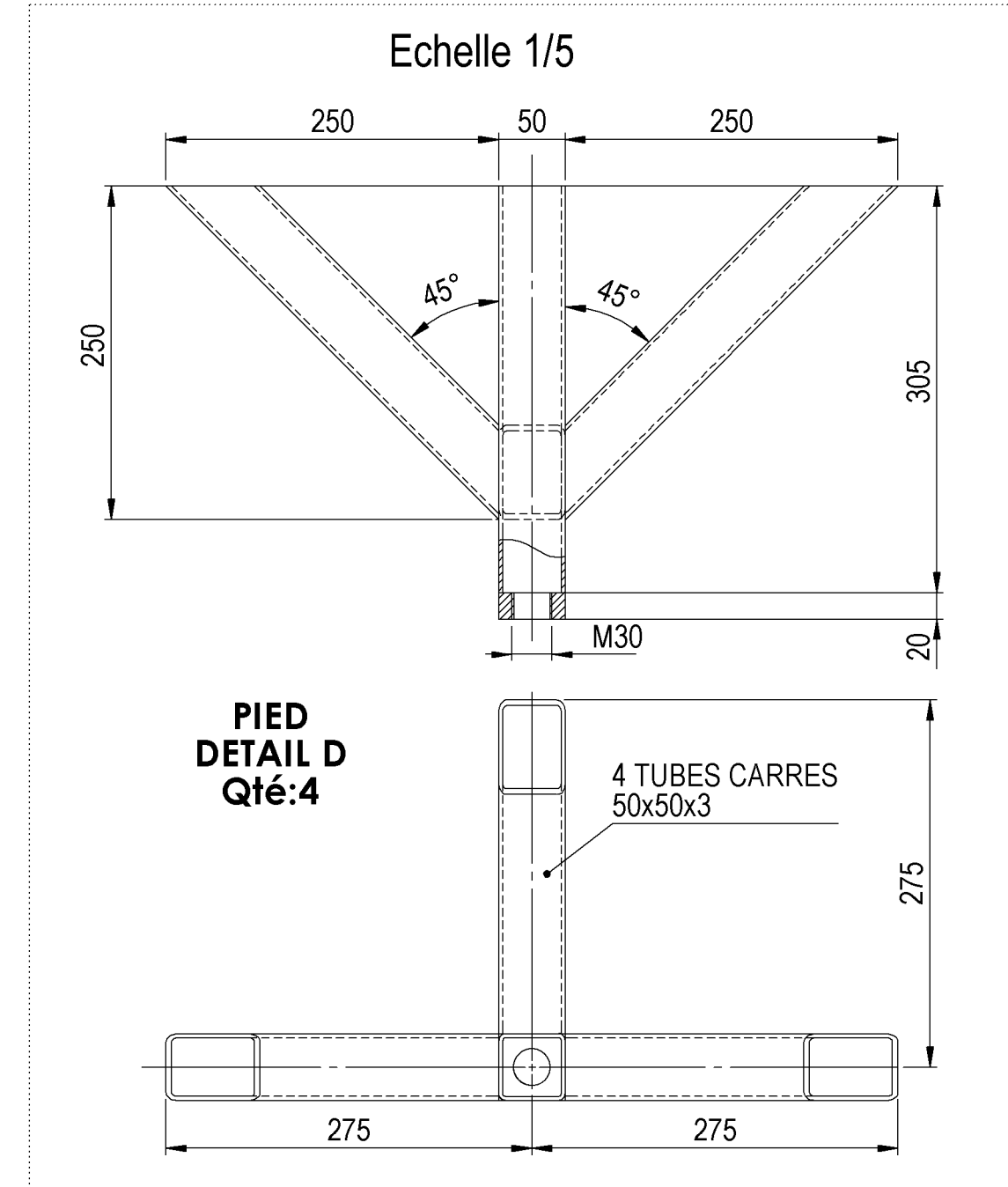
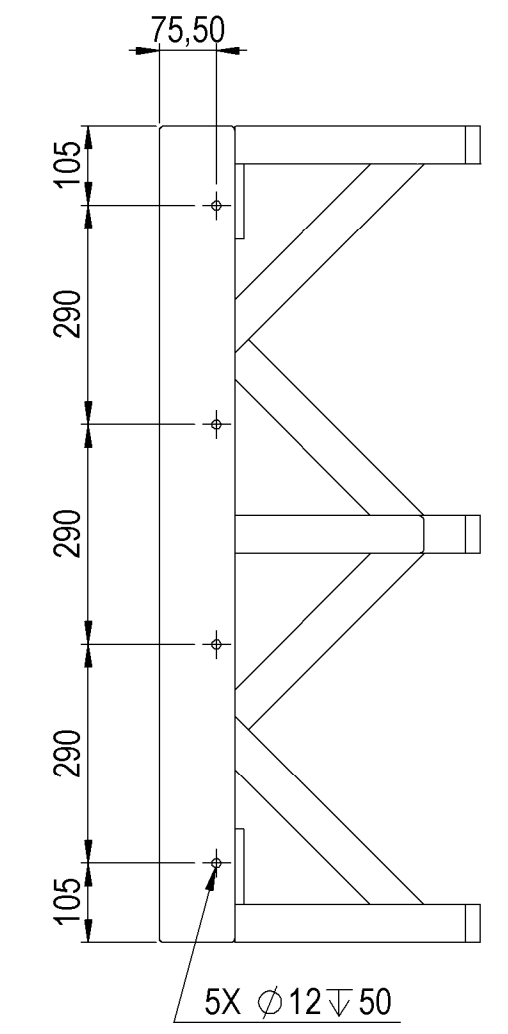
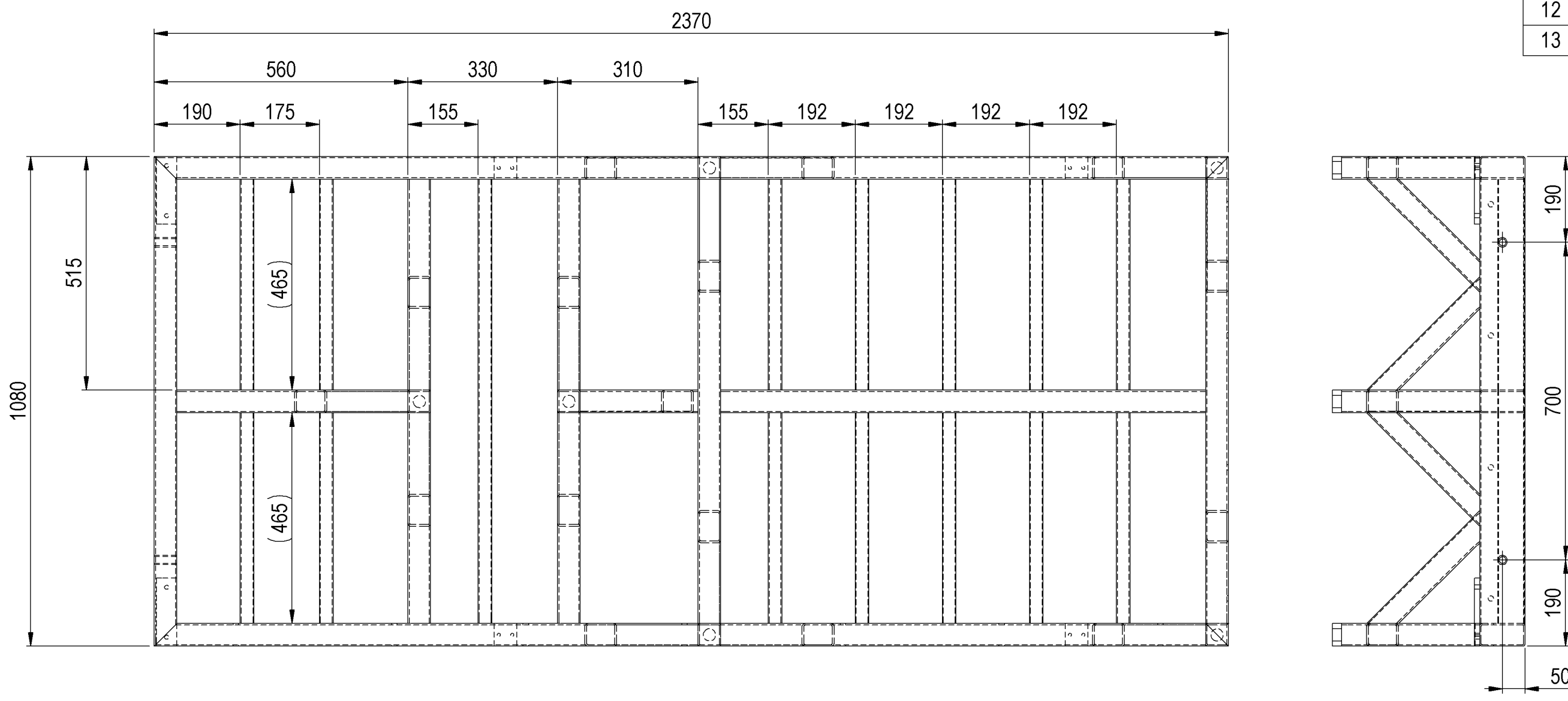
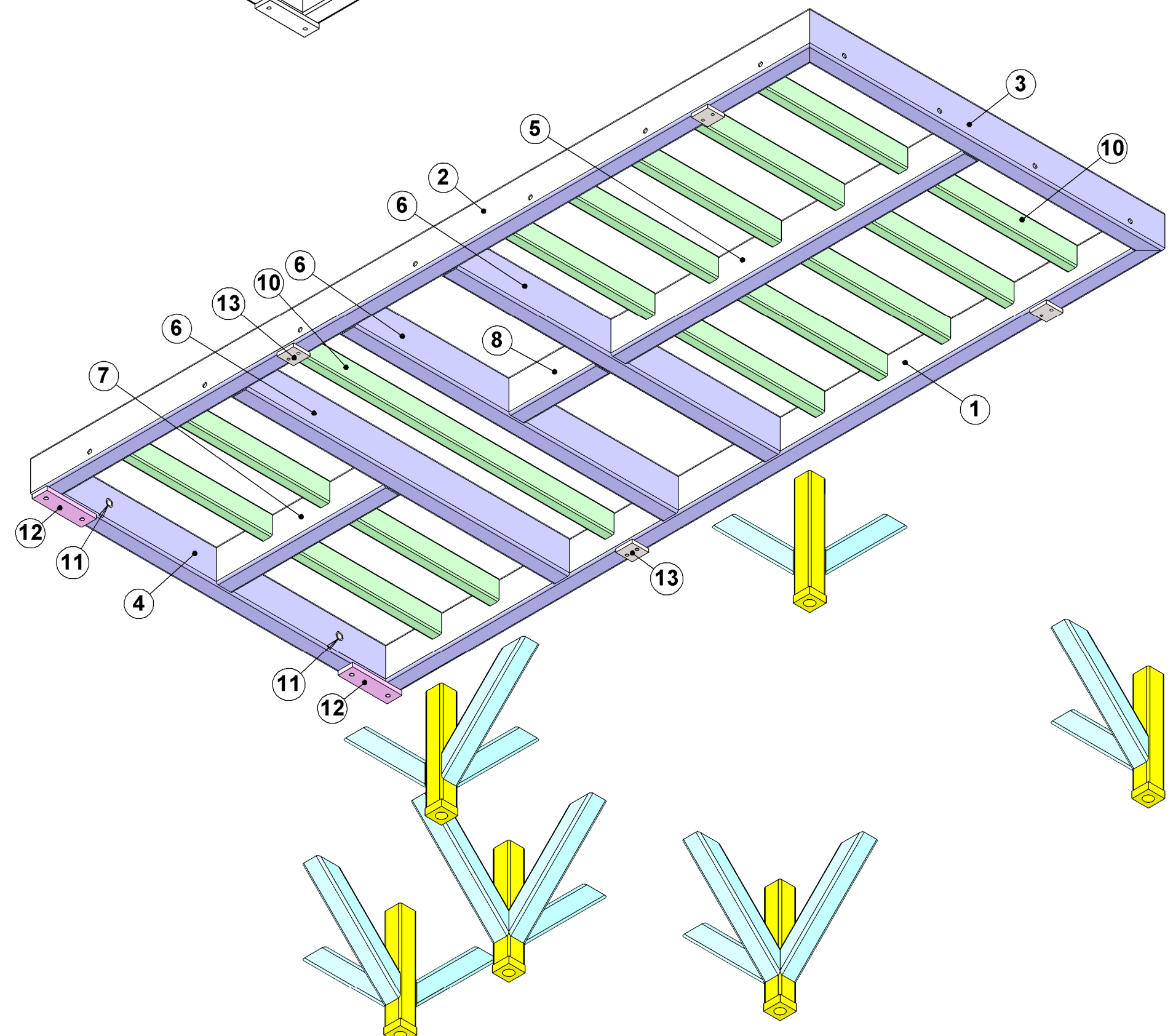
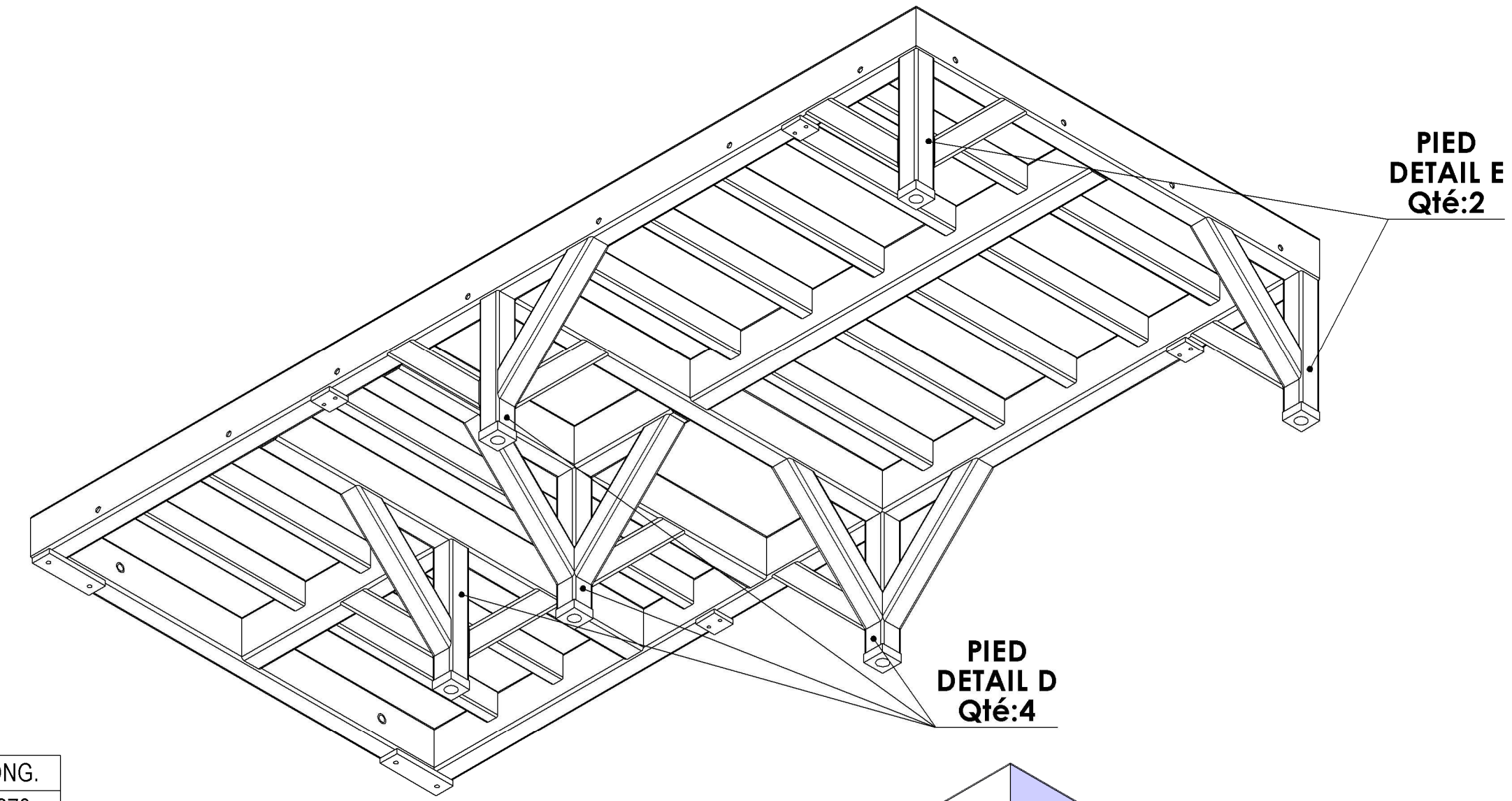


No.	QTE	DESCRIPTION	LONG.
1	1	Tube rectangulaire 100x50x3	2370
2	1	Tube rectangulaire 100x50x3	2370
3	1	Tube rectangulaire 100x50x3	1080
4	1	Tube rectangulaire 100x50x3	1080
5	1	Tube rectangulaire 100x50x3	1070
6	3	Tube rectangulaire 100x50x3	980
7	1	Tube rectangulaire 100x50x3	510
8	1	Tube rectangulaire 100x50x3	260
9	4	Tube rectangulaire 60x30x2	465
10	11	Tube rectangulaire 60x30x2	980
11	2	Tube 15x21 Lg:50	
12	2	Platine 150x45x12 Detail A	
13	4	Platine 50x50x10 Detail B	



SOUDURES : A=3 CONTINUE ETANCHE
TOLERANCE GENERALE : ± 1 mm
TOLERANCE DE PLANEITE : ± 1 mm/m
PEINTURE EPOXY EP: 60µ
COULEUR : BLANC RAL 9010
MASSE 126 Kg

Ind. F		
Ind. E		
Ind. D		
Ind. C		
Ind. B		
Projet : CHASSIS QUIX20		Matière : E24-2
Désignation : CHASSIS 1		Traitement : -
		Rug. géné: 3.2
		Tol. géné: +/- 0.1mm
Heyman		
5 place de gordes 38000 Grenoble		
Tel : 06 33 31 88 11 e-mail : heyman@design-mecanique.fr		
N° de plan : FAU-QUIX20 -02		