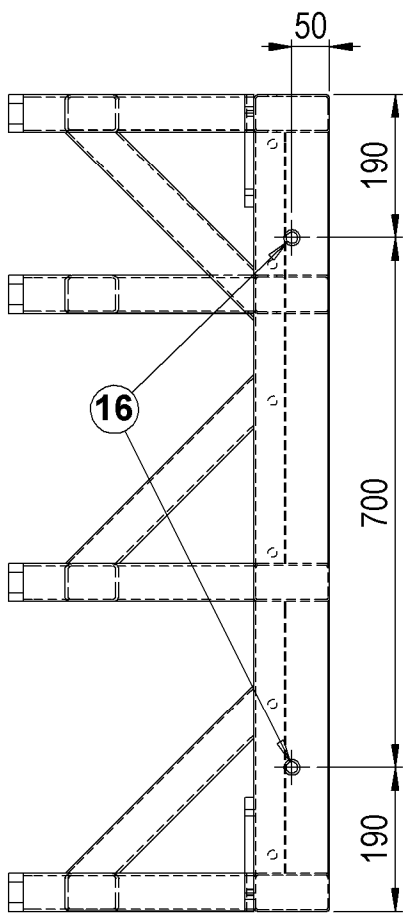
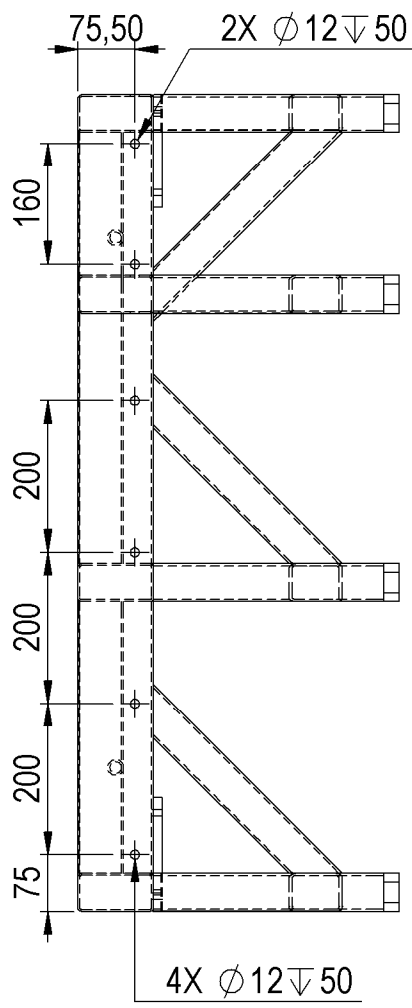
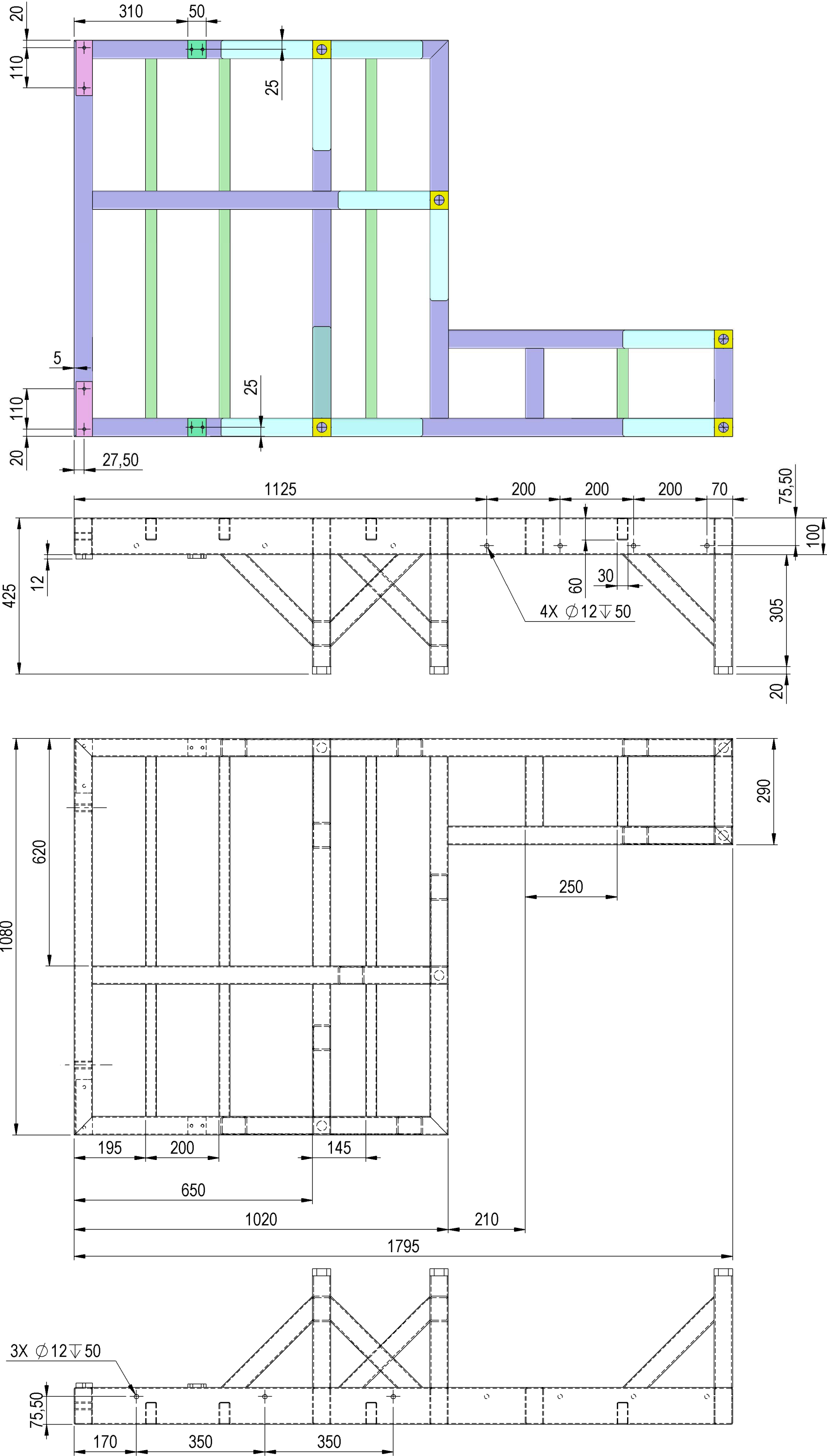
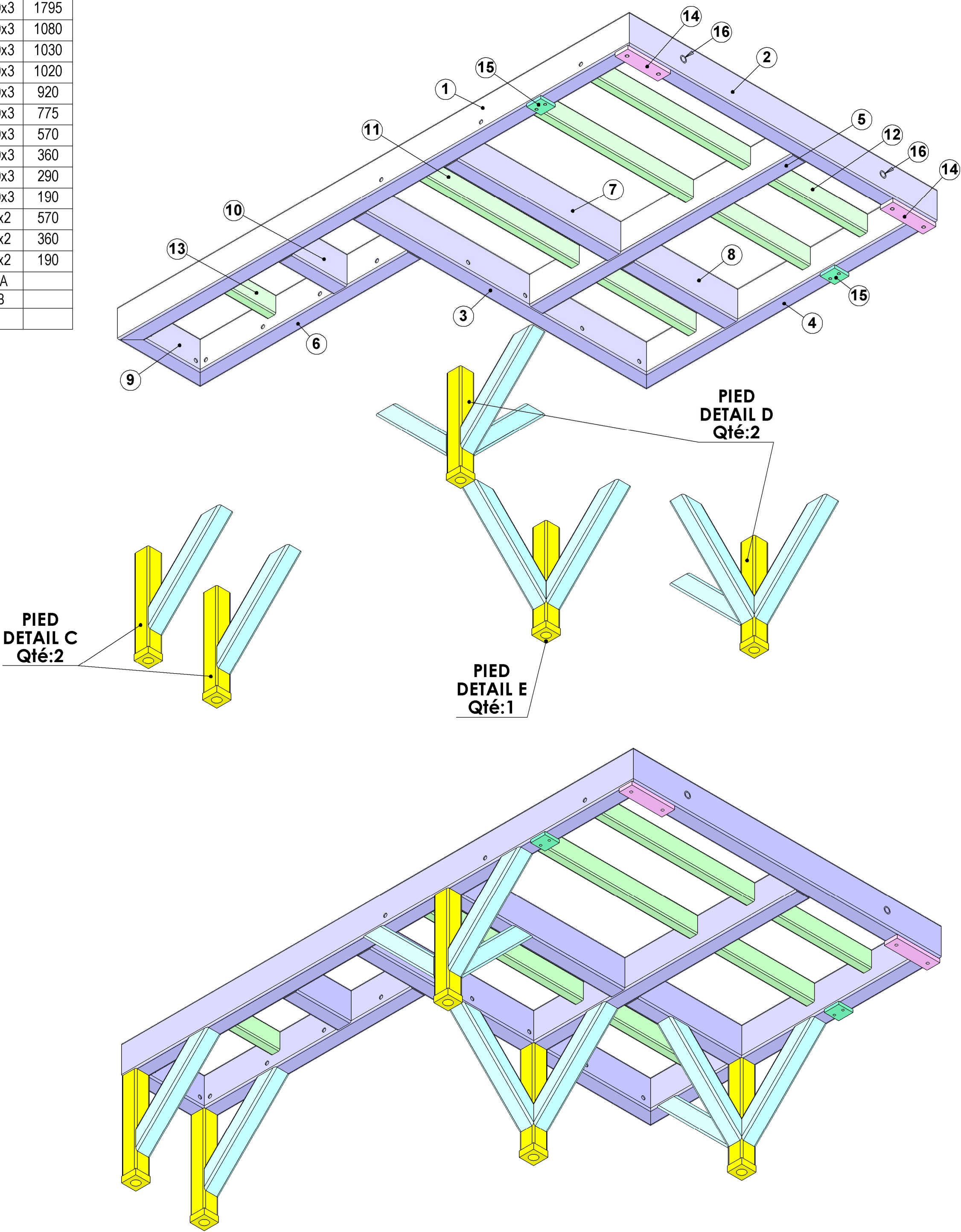
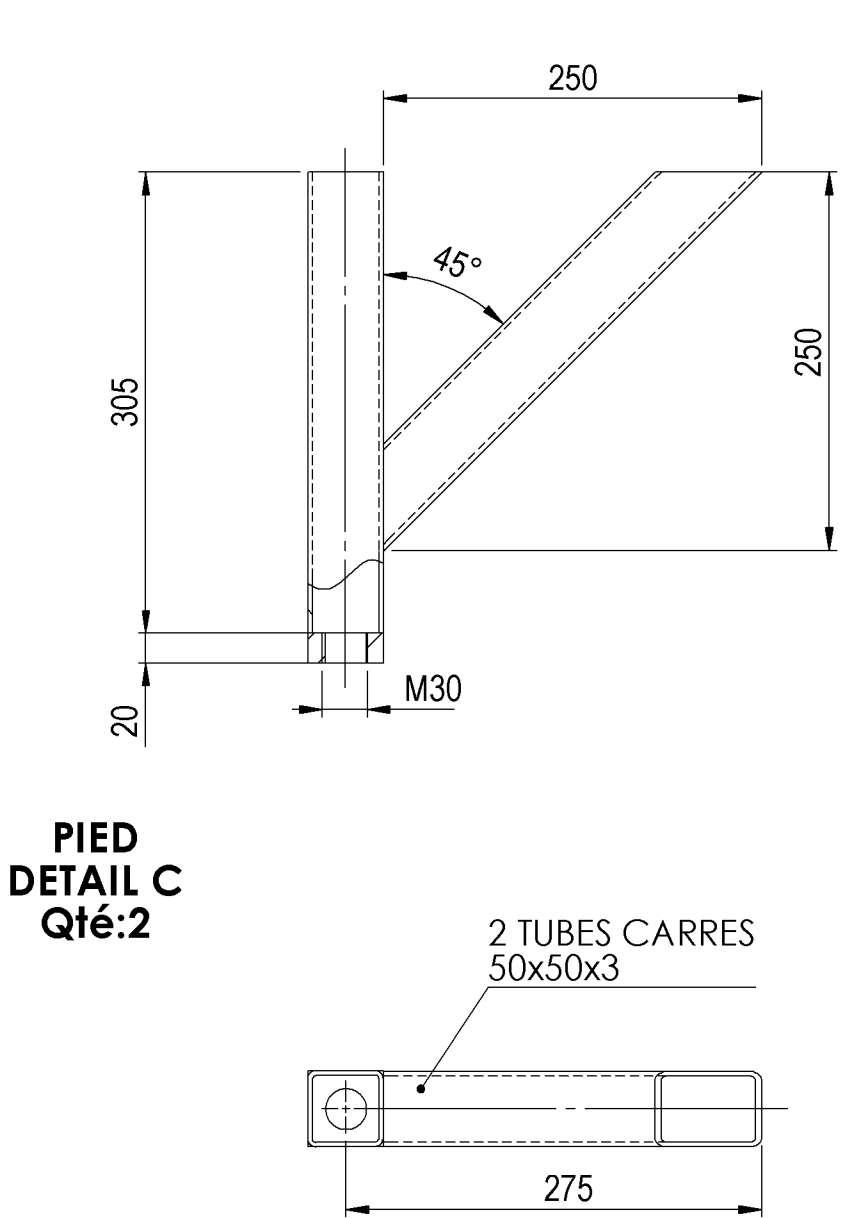


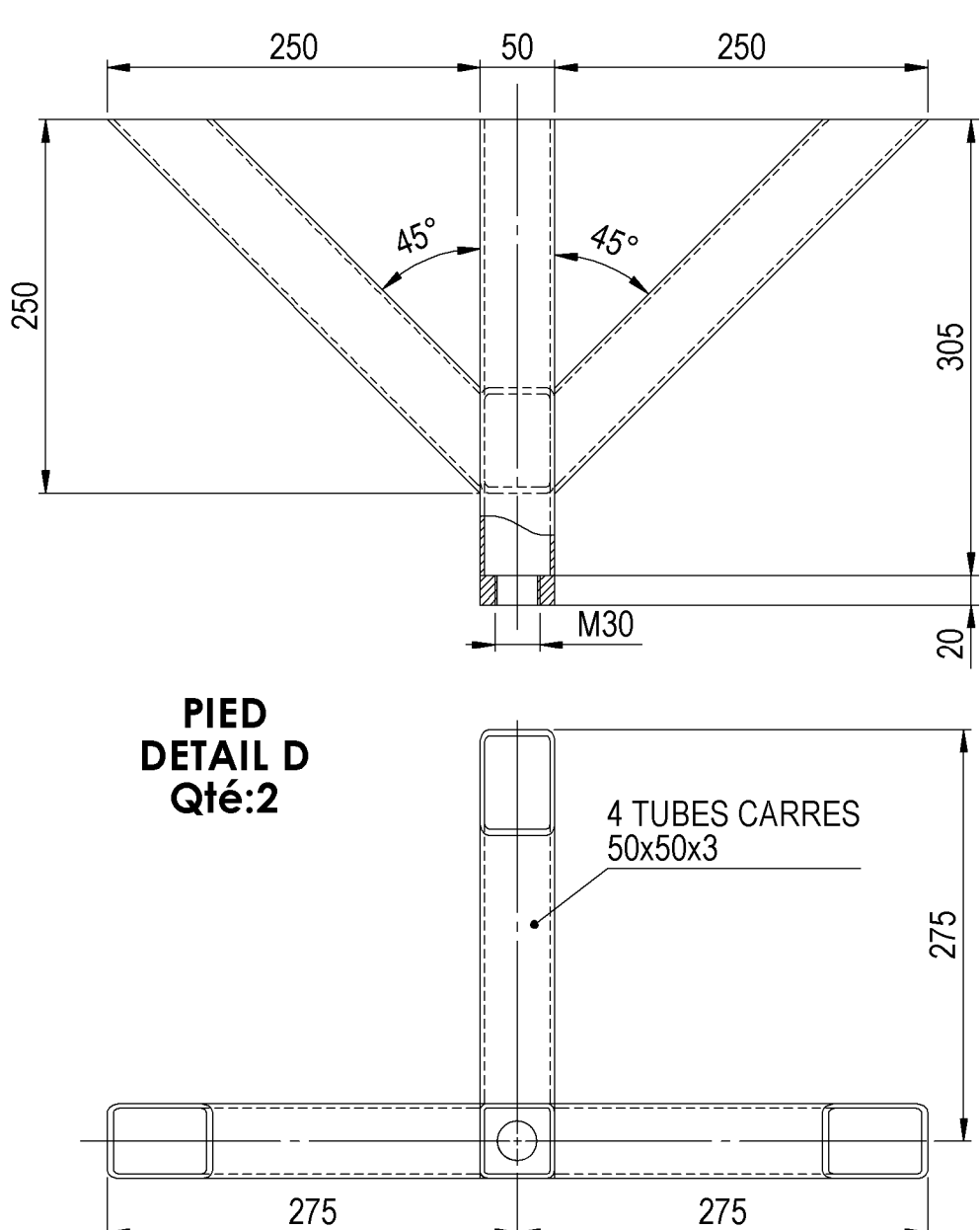
No.	QTE	DESCRIPTION	LONG.
1	1	Tube rectangulaire 100x50x3	1795
2	1	Tube rectangulaire 100x50x3	1080
3	1	Tube rectangulaire 100x50x3	1030
4	1	Tube rectangulaire 100x50x3	1020
5	1	Tube rectangulaire 100x50x3	920
6	1	Tube rectangulaire 100x50x3	775
7	1	Tube rectangulaire 100x50x3	570
8	1	Tube rectangulaire 100x50x3	360
9	1	Tube rectangulaire 100x50x3	290
10	1	Tube rectangulaire 100x50x3	190
11	3	Tube rectangulaire 60x30x2	570
12	3	Tube rectangulaire 60x30x2	360
13	1	Tube rectangulaire 60x30x2	190
14	2	Platine 150x45x12 Detail A	
15	2	Platine 50x50x10 Detail B	
16	2	Tube 15x21 Lg:50	



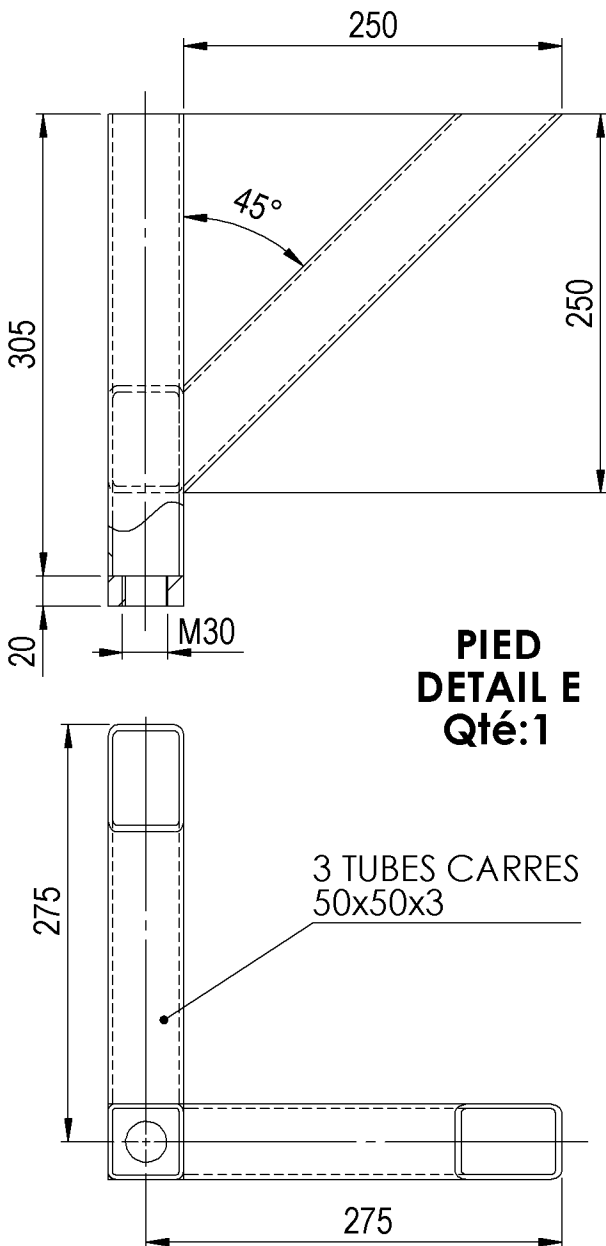
Echelle 1/5



Echelle 1/5

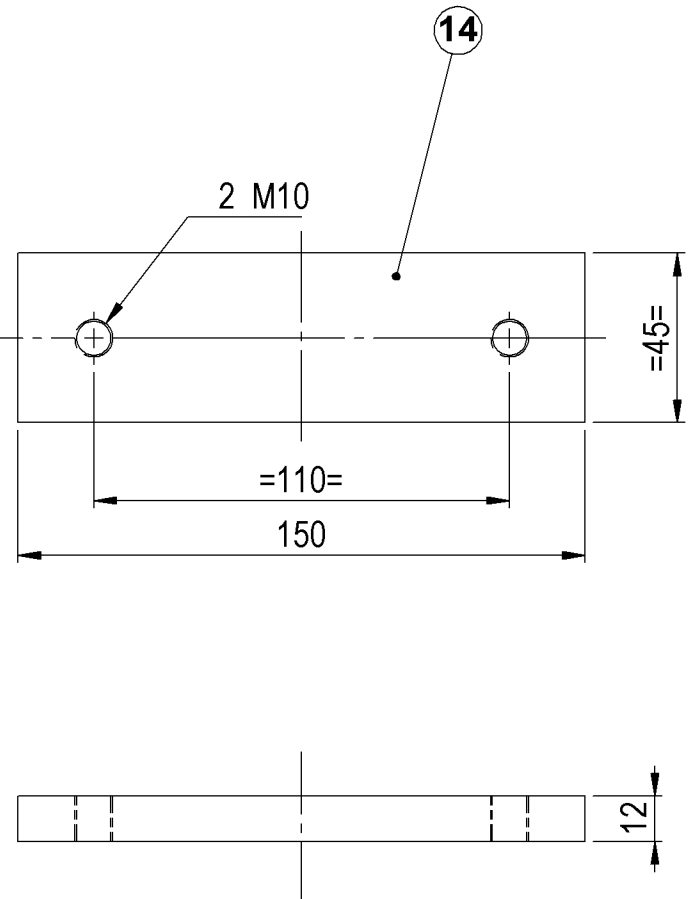


Echelle 1/5



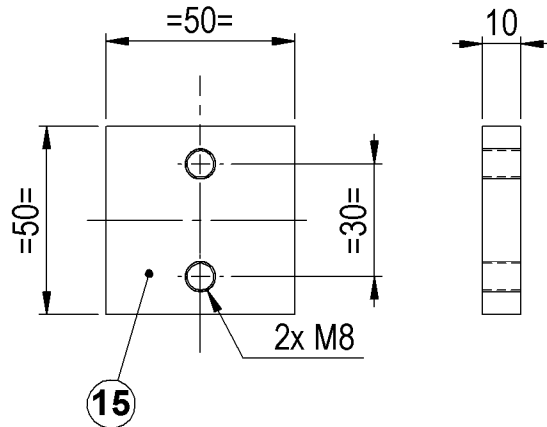
Echelle 1/2

DETAIL A
Qté:2



Echelle 1/2

DETAIL B
Qté:2



SOUDURES : A=3 CONTINUE ETANCHE
TOLERANCE GENERALE : ± 1 mm
TOLERANCE DE PLANEITE : ± 1 mm/m
PEINTURE EPOXY EP: 60µ
COULEUR : BLANC RAL 9010
MASSE 74 Kg

Ind. F		
Ind. E		
Ind. D		
Ind. C		
Ind. B		
Matière : E24-2		
Traitement : -		
Rug. gén.: 3.2		
Tol. gén.: +/- 0.1mm		
Heyman		
5 place de gardes 38000 Grenoble		
Tel : 06 33 31 88 11 e-mail : heyman@design-mecanique.fr		
Nom de fichier : FAU-QUIX20-03		
Date de création : 29/08/2025		
N° de plan : FAU-QUIX20 -03		
Indice :		