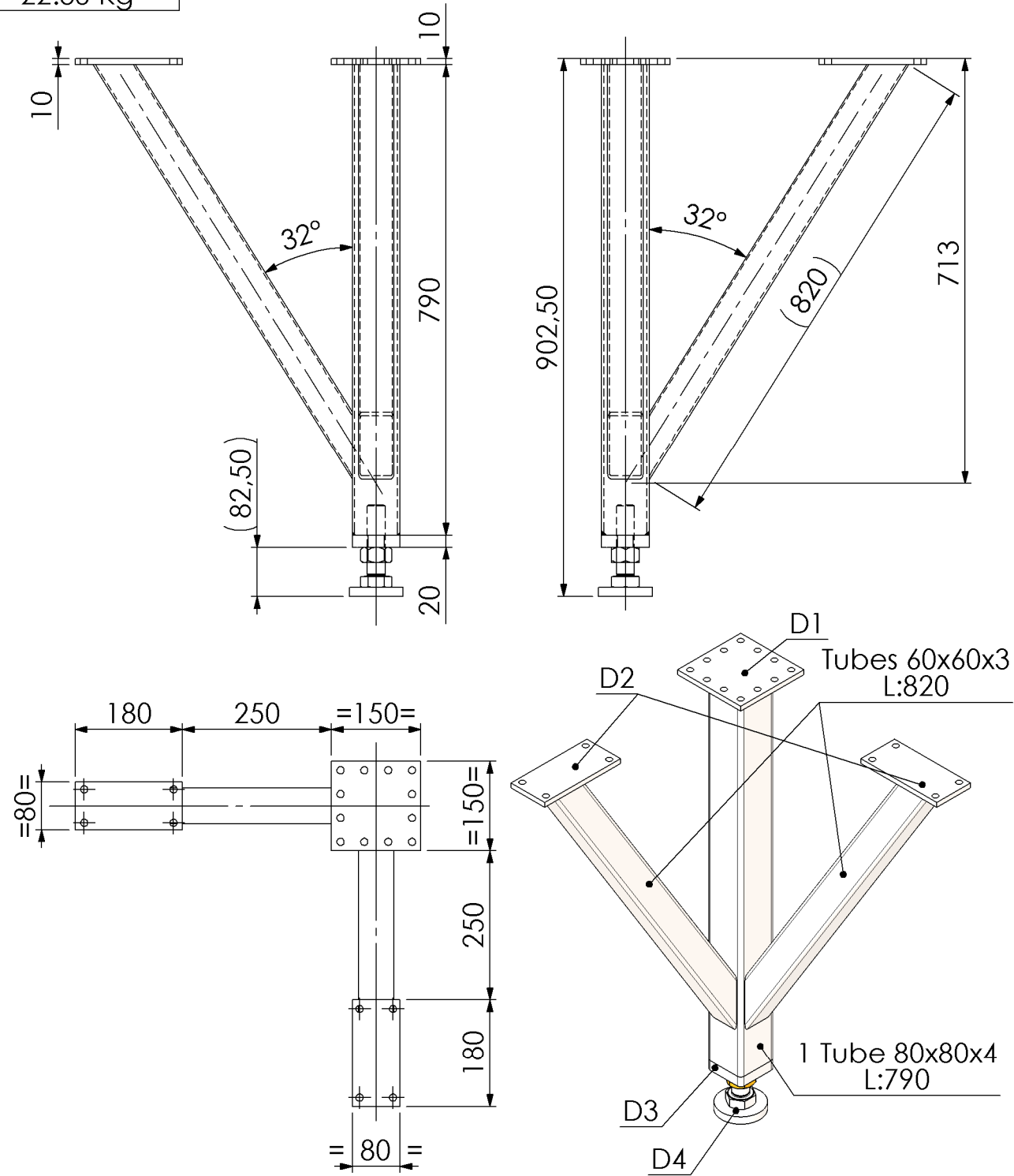
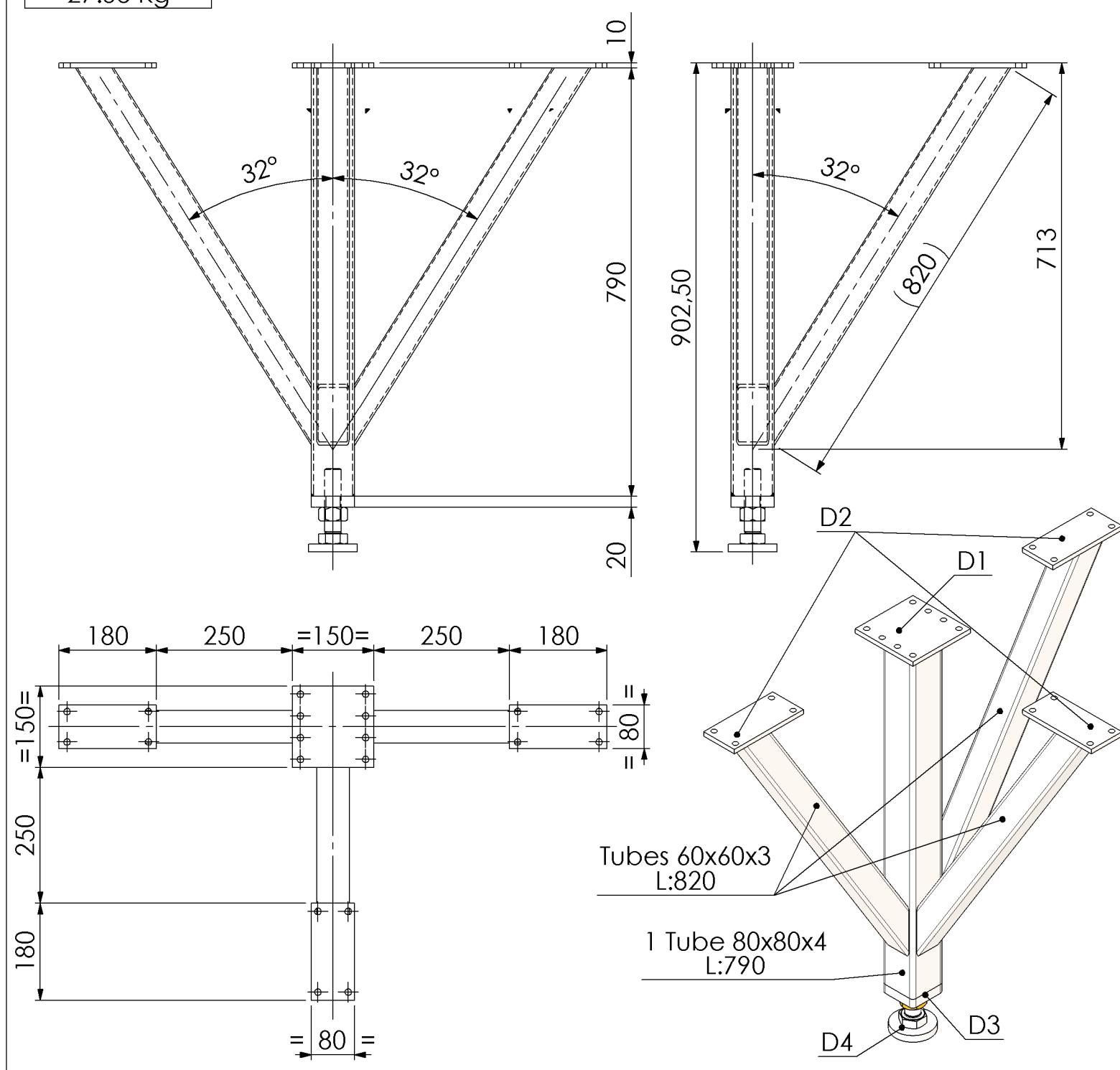


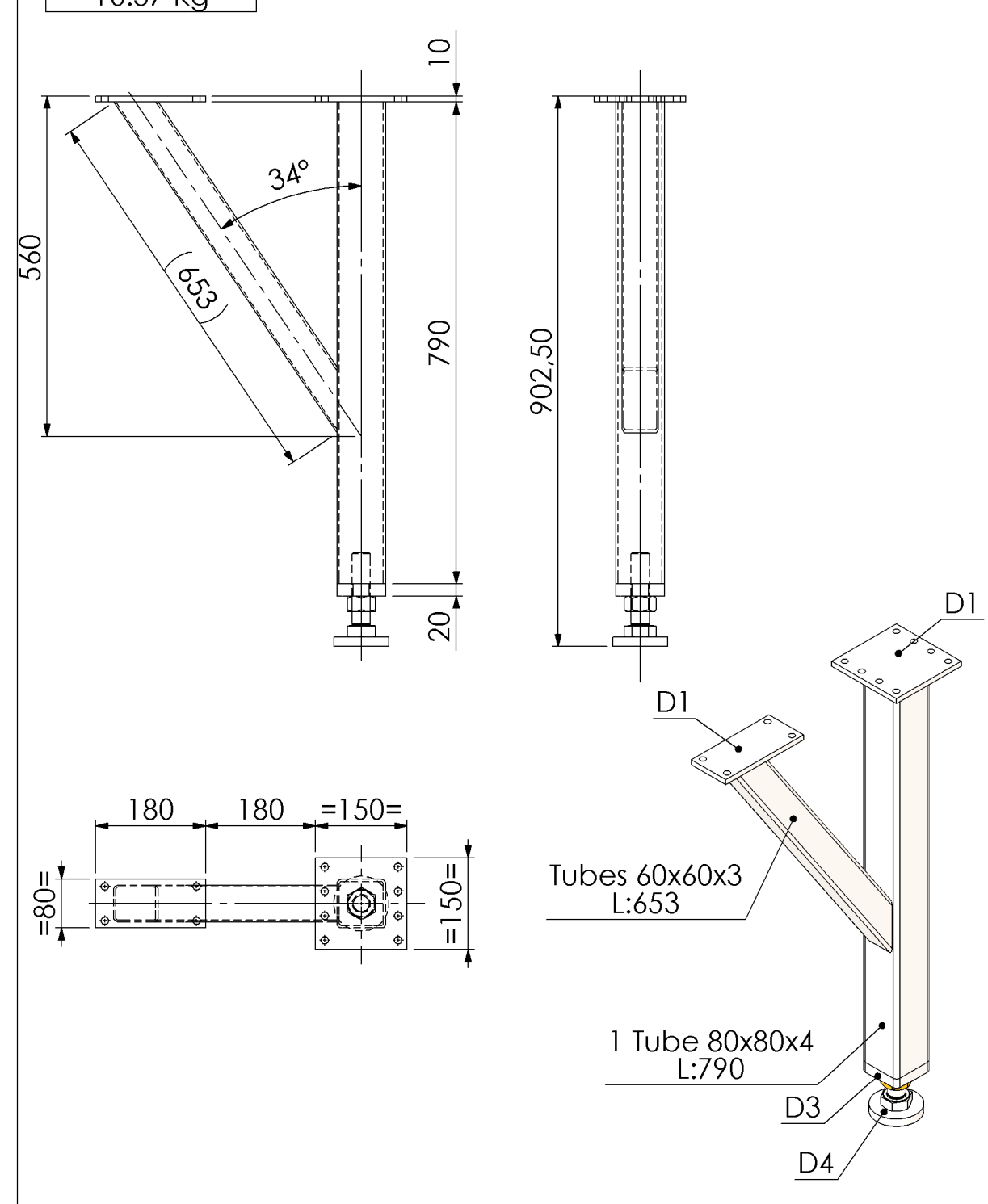
FAU-SELEK12-05
POTEAU 1
22.35 Kg



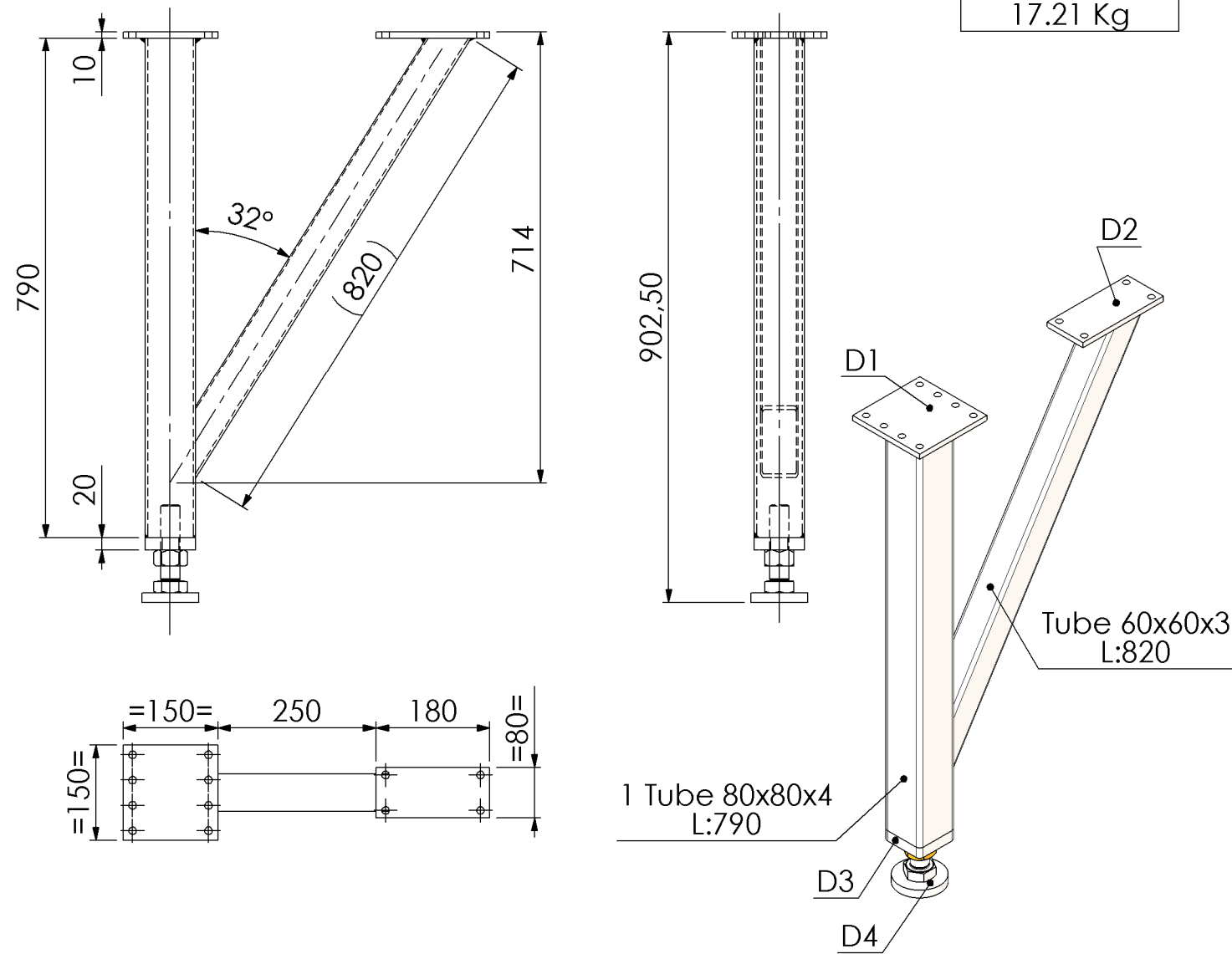
FAU-SELEK12-05
POTEAU 2
27.58 Kg



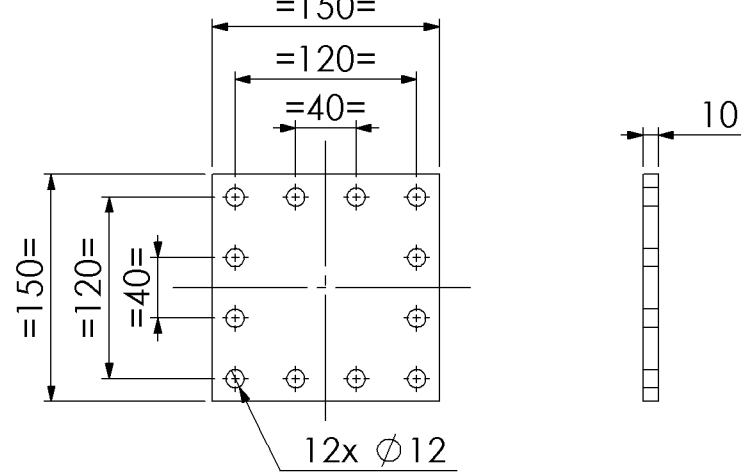
FAU-SELEK12-05
POTEAU 4
16.37 Kg



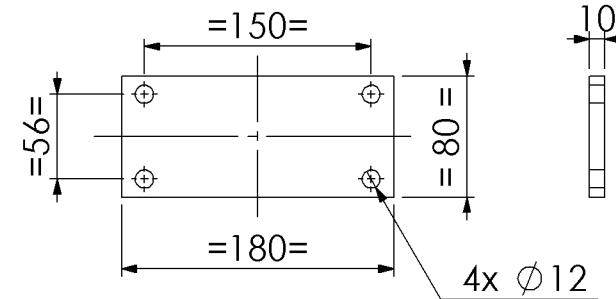
FAU-SELEK12-05
POTEAU 3
17.21 Kg



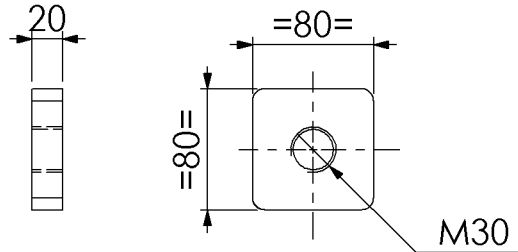
D1
Ech:1/5



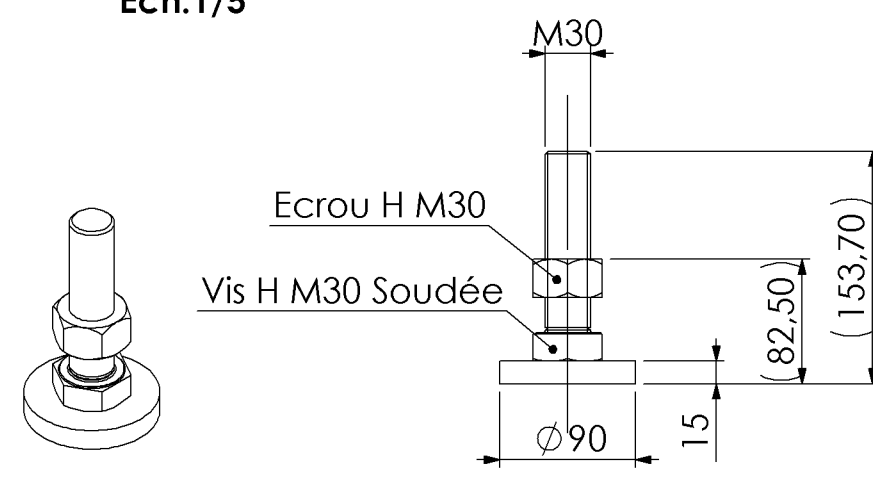
D2
Ech:1/5



D3
Ech:1/5



D4
Ech:1/5



SOUDURES : A=3 CONTINUE ETANCHE
TOLERANCE GENERALE : ± 1 mm
TOLERANCE DE PLANEITE : ± 1 mm/m
PEINTURE EPOXY EP: 60µ
COULEUR : BLANC RAL 9010

Ind. F		
Ind. E		
Ind. D		
Ind. C		
Ind. B		
Projet : CHASSIS SELEK12		
Désignation : POTEAU		
Masse :		
Matière : E24-2		
Traitement : PEINTURE		
Rug. gén.: 3.2		
Tol. gén.: +/- 0.1mm		
Echelle:1:10 Format:A2 Feuille 1 / 1		
date de création : 26/07/2025		
Indice		
Nom de fichier : FAU-SELEK12-05		
N° FAU-SELEK12 -05		

5 place de Gordes 38000 Grenoble
Tel : 06 33 31 88 11 e-mail : heyman@design-mecanique.fr

Heyman

FAURE-QEI