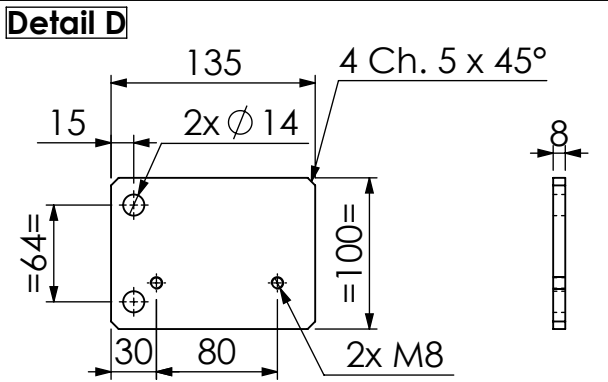
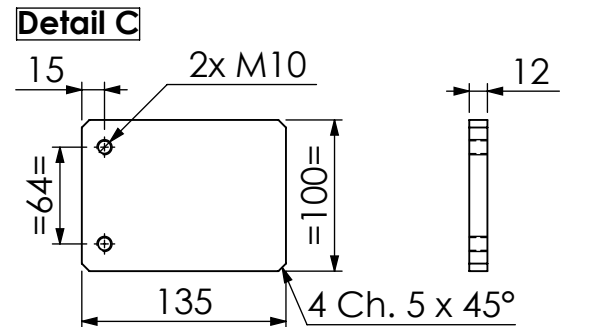
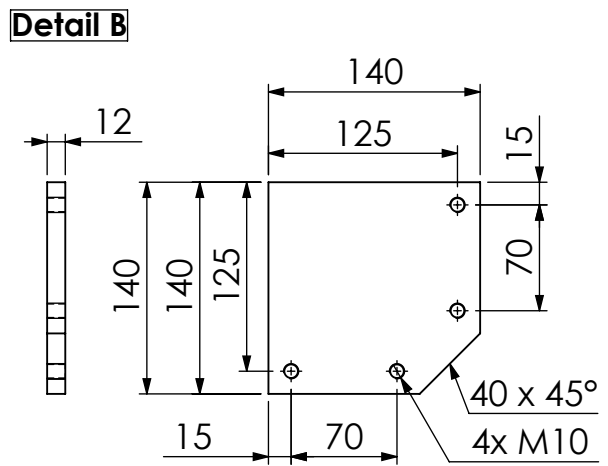
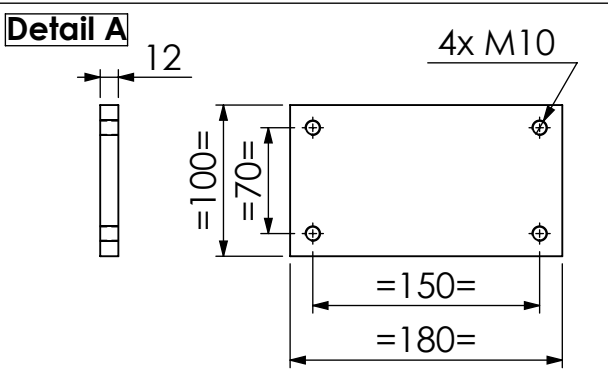


DETAILS ECH: 1/5



SOUDURES : A=3 CONTINUE ETANCHE
TOLERANCE GENERALE : ± 1 mm
TOLERANCE DE PLANEITE : ± 1 mm/m
PEINTURE EPOXY EP: 60µ
COULEUR : BLANC RAL 9010

No.	QTE	DESCRIPTION	LONGUEUR
1	2	Tube carré 100x100x3	1080
2	2	Tube carré 100x100x3	1110
3	1	Tube carré 100x100x3	1080
4	2	Tube carré 100x100x3	480
5	7	Tube carré 40x40x3	705
6	1	Tube carré 40x40x3	595
7	1	Tube carré 40x40x3	190
8	2	Tube carré 40x40x3	175
9	2	Tube carré 40x40x3	135
10	11	Platine 180x100x12 detail A	
11	2	Platine 140x140x12 detail B	
12	3	Platine 135x100x12 detail C	
13	4	Platine 135x100x8 detail D	

Ind. F		
Ind. E		
Ind. D		
Ind. C		
Ind. B		
Projet : CHASSIS TEL KC		Masse : 99.5 Kg
Désignation : DETAIL CADRE		Matière : E24-2
		Traitement : Voir Note
		Rug. géné.: 3.2
		Tol. géné.: +/- 0.1mm
Heyman		Echelle:1:10 Format:A2 Feuille 1 / 1
5 place de Gordes 38000 Grenoble		date de création : 10/10/21
Tel : 06 33 31 88 11 e-mail : heyman@design-mecanique.fr		N° de plan
		Indice
		TEL-KC-FAU-02